



INVESTING IN NEW YORKERS



New York
Public
Library

Annual Report 2013



Bronx



Manhattan

Staten Island

LETTER FROM THE CHAIRMAN AND THE PRESIDENT

March 2014



Neil Rudenstine

It has been an impressive year at The New York Public Library, and we are honored to share some of the highlights. Together they show the crucial ways that NYPL invests in New Yorkers by providing the tools they need to succeed—free educational programs, vibrant library spaces, and access to free books and materials.

This year, we are especially proud of a major expansion of our educational opportunities for all ages. For kids and teens, we have created new programs that turn our libraries into learning hubs providing after-school help in reading, writing, and other core subjects (p. 5). Exciting programs such as NYPL BridgeUP and MyLibraryNYC, the latter a partnership with the NYC Department of Education, are transforming the way the Library serves students and teachers (p. 6). For adults, we are dramatically expanding free English and computer classes to keep up with the growing need for these services (pp. 7–8).

Along with these powerful initiatives, NYPL is continuing to build and strengthen its neighborhood libraries. Stapleton Library on Staten Island reopened last summer after a major renovation, adding more than 7,000 square feet of space for the community (p. 9). Overall, more than \$250 million of capital upgrades are currently underway across the Library's three boroughs. As always, NYPL is constantly enriching our research and circulating holdings, from acquiring manuscripts by major writers such as Jack Kerouac and George Bernard Shaw to making major investments in new formats (the Library now purchases approximately 45,000 copies of e-books a year).

We greatly appreciate the generosity of our donors, as well as the unflagging support of our friends in government at all levels. Their dedication to The New York Public Library helps us bring New Yorkers the world-class library they rely on—and deserve.



Anthony Marx

With thanks to all,

A handwritten signature in black ink that reads "Neil Rudenstine". The signature is written in a cursive, flowing style.

Neil L. Rudenstine
Chairman

A handwritten signature in black ink that reads "Tony Marx". The signature is written in a cursive, flowing style.

Anthony W. Marx
President



The New York Public Library

Annual Report 2013

Investing in New Yorkers

LETTER FROM THE CHAIRMAN AND PRESIDENT	3
INVESTING IN...	5
Opportunities for Kids and Teens	5
Opportunities for Adults	7
Our Branches	9
Our Collections	11
BOARD OF TRUSTEES, COMMITTEES, AND DONORS	13
Board of Trustees	14
Leadership Committees	16
Donors	18
FINANCIALS	46
Report of the Treasurer	46
Balance Sheets	48
Financial Activities	49
DIRECTORY OF NYPL LOCATIONS	52

Produced by the Department of Communications

© The New York Public Library, Astor, Lenox and Tilden
Foundation, 2014

Pages 5–12 were originally published, in slightly different
form, in *Inside NYPL* Year-End 2013

COVER IMAGE: Jonathan Blanc

INVESTING IN OPPORTUNITIES FOR KIDS & TEENS



Tutors work with elementary-school students at an Enrichment Zone program at High Bridge Library in the Bronx, one of four new NYPL after-school programs.

New After-School Programs Help Students

LAST FALL, as children and teens across New York City returned to school, NYPL launched a series of innovative after-school programs in neighborhood branches that are designed to give students extra academic support.

Staffed by specially trained classroom and after-school teachers, the Library's programs welcomed 600 students from first grade through high school at 10 libraries in the Bronx, Manhattan, and Staten Island.

The programs will provide spots for more than 2,100 children through the end of its first year.

Looking ahead, the Library plans to expand the programs to neighborhood libraries across the system.

Together, the new programs aim to provide enriching experiences for the large number of students who don't have access to organized after-school activities.

Hands-On Learning for Kids and Teens

The new project consists of four different programs, each geared to different ages and needs.

Enrichment Zones, for grades 1–8, provide kids with customized homework help and skill building through one-on-one and group tutoring in reading, writing, math, and other subjects. Students also receive guided time with educational technology.

Enrichment Zones

High Bridge Library, Bronx

“They help me with my grammar homework, especially when I don’t understand it.”

KWABENA BREW, 8

Kwabena receives tutoring after school at High Bridge Library. The second grader, whose family is from Ghana, loves the extra help—and getting his homework done before heading home.

Innovation Labs, for middle and high school students, encourage young people to experiment with technology while working on group projects that address issues such as immigration and homelessness.

Literacy Leaders offers 11th and 12th graders academic credit while they learn how to teach first and second graders to become better readers. Once the teens complete a training program, they work as paid literacy tutors at the Library. Literacy Leaders also helps strengthen the older readers' skills.

2,100

Number of after-school spots available in the program's first year to help kids learn

INVESTING IN OPPORTUNITIES FOR KIDS & TEENS



Teens at 115th Street Library earn school credit while training to help younger children learn to read as part of the Library's new Literacy Leaders program.

A Bridge to College

The Library also launched an intensive college-readiness and anti-poverty program made possible by a generous \$15 million grant from the Helen Gurley Brown Trust.

NYPL BridgeUp debuted last fall with a group of teens at Countee Cullen Library in Harlem. It has now expanded to reach 250 eighth to 12th graders at five libraries in the Bronx and Manhattan.

The groups receive intensive mentoring and support at the Library, with the goal of going on to attend college or technical school.

Literacy Leaders 115th Street Library, Manhattan

“When I was a kid, I didn’t have anyone to look up to. I want to be that person for these kids.”

KATHERINE SALAS, 18

Katherine, a high school senior, has long been coming to NYPL for refuge and inspiration. Now she’s delighted to give back while building her own skills.

The NYPL BridgeUp Program has been made possible thanks to the Helen Gurley Brown Revocable Trust. Major support for after-school programming is provided by Arthur W. Koenig; the Mr. and Mrs. Timothy R. Barakett Endowment for Children’s and Young Adult Programs and Services; the E.H.A. Foundation Endowment for Literacy Programming; and The Pinkerton Foundation, with additional support from the Estate of Brooke Russell Astor and the Estate of Mary McConnell Bailey.

BRINGING BOOKS TO PUBLIC SCHOOLS



ALONG WITH helping kids and teens who come to our branches, the Library now provides books directly to teachers and students.

MyLibraryNYC, a partnership between the city’s public libraries and the Department of Education, was started as a pilot by The New York Public Library in 2011. Last fall, it expanded to help 250,000 students in 500 schools. The program allows teachers to supplement their school libraries’ collections with more than 14 million items from the circulating collections of NYPL, as well as the Brooklyn and Queens library systems.

Christine Poser (above), a librarian at Intermediate School 24 near Great Kills Library on Staten Island, relies on the program to help teachers in subjects ranging from English, math, and science to art and theater. “It’s broken down the traditional walls of the library,” she says. “It’s wonderful to collaborate with teachers in all subject areas and get books delivered right to their classrooms.”

citi Proud Partner of MyLibraryNYC.

INVESTING IN OPPORTUNITIES FOR ADULTS

Strengthening English Skills at the Library

OVER THE PAST YEAR, the Library has tripled the size of its free English for Speakers of Other Languages (ESOL) and Adult Literacy program in order to meet the needs of the city's growing number of immigrants from around the world.

With 38 percent of the city's population now born abroad, the Library aims to become New York City's largest provider of free classes after the public school system. NYPL also offers literacy classes and tutoring to help adults who speak English but have difficulty reading and writing strengthen their communication skills.



Students at an ESOL class at St. George Library Center in Staten Island work on their English speaking skills with a staff specialist.

The Library's free English classes are particularly important to low-income students who need to improve their English to get work, take classes, help their children in school, or pass their citizenship tests. Nearly two-thirds of the Library's ESOL students have a total family income of less than \$25,000 a year.

The Library now offers spots for more than 6,000 students in classes year-round at 29 libraries throughout the system, up from 17 last year. In the coming years, NYPL aims to expand the program tenfold while broadening it to 50 libraries.

While adding locations, the Library has also sought to strengthen the program. To this end, NYPL has hired more teachers and added classes at a

64% of ESOL students at NYPL have a family income of less than \$25,000

greater variety of times, including evenings and weekends. The Library also now offers an array of classes, from beginner to advanced.

Last summer, the more than 1,500 students who enrolled in the Library's classes came from dozens of countries, including Egypt, Honduras, Sri Lanka, and Thailand. Participants range from recent immigrants to longtime residents who are seeking to improve their English skills.

ESOL classes

St. George Library Center,
Staten Island

“Doors are open to me more now than before. I can do more, get more, and give more.”

BIERKA ZARZUELA

Bierka, a young mother who moved to New York from the Dominican Republic, finally passed her citizenship test last spring after completing ESOL classes at St. George Library Center.



Job seeker Randy Ngo has been learning new skills at a bilingual Mandarin-English computer training class at Chatham Square Library in Chinatown.

TechConnect computer classes
Chatham Square Library,
Manhattan

“I want to learn Excel because I think it’s good for the future—it might help me get a new job.”

RANDY NGO

Randy managed a warehouse for 15 years before getting laid off last fall. Now he’s brushing up on his computer skills at Chatham Square Library.

Expanding Tech Training

THE LIBRARY has long served a critical role in bridging the “digital divide” by offering free computer access and basic skills classes across its locations.

But now, as the importance of computer literacy continues to grow, the Library has launched an ambitious plan to increase and improve its technology training while expanding access for the one-quarter of New Yorkers who lack a home computer.

NYPL’s **TechConnect** program seeks to double attendance at computer classes offered across the Library while improving

instruction and vastly expanding the types and levels of training available.

The Library now offers more than 80 different technology classes ranging from e-mail basics to online banking and finding a job online, with some offered in Spanish, Chinese, and other languages. In addition, special training labs have been set up at six libraries.


80 Number of different computer classes offered at locations across NYPL

Meanwhile, the Library is also devoting \$15 million to its large-scale **Next Generation Desktop** initiative. The project includes

replacing computers and upgrading software and other services throughout the system. Desktops using the Mac platform are available alongside the Windows-based computers at a few NYPL locations.

Major Support for the Library’s adult literacy, English language programs, and technology training is provided by the Mayor’s Office of Adult Education as part of the New York City Adult Literacy Initiative; Arthur W. Koenig; The Pasculano Foundation; The Lois M. Collier Endowment Fund; The JPB Foundation; the Joseph and Sylvia Slifka Foundation, Inc.; and the Federal Workforce Investment Act, Title II funding administered through the New York State Education Department.

Additional support provided by the New York City Department of Youth and Community Development; Mr. and Mrs. Arnold M. Goldstein; New York City Center for Economic Opportunity; Altman Foundation; Funding from the Mayor’s Young Men Initiative administered through the New York City Department of Youth and Community Development; the Kagan Fund; New York State Coordinated Outreach Services Program; The Bailey Endowment for English Language Learning Programs; Richard Roth Foundation; New York State Library’s Adult Literacy Library Services grant program; The Staten Island Foundation; Murray G. and Beatrice H. Sherman Charitable Trust; and an anonymous donor.

TechConnect is funded in part by **Bank of America** 

INVESTING IN OUR BRANCHES



Staten Island's newly renovated Stapleton Library features a modern addition to the 106-year-old branch, bridging the library's past and future.

Enhancing the Library's 92 Locations

IN JUNE 2013, NYPL reopened Stapleton Library on Staten Island after a major renovation that added a modern, light-filled expansion to the original Carnegie Library, more than doubling its size.

The \$15 million renovation is among nearly \$250 million worth of capital upgrades currently underway across NYPL. Two additional major projects made recent debuts: the brand-new Mariners Harbor Library, Staten Island's 13th branch, and the beautifully renovated Washington Heights Library, which reopened with a new glass elevator, an

expansive children's room with comfortable seating areas, and a large collection of books in Spanish.

Overall, NYPL has built six new neighborhood libraries—including the Bronx Library Center, Battery Park City, and Kingsbridge—and renovated a dozen others since 2006.

Stapleton Welcomes Modern Amenities and Design

At Stapleton, the original brick and limestone building from 1907 has been updated to serve as an inspiring new children's room. A glass-walled addition connects to the historic structure and features soaring ceilings, an adult reading room with 40 desktop computers, a new teen zone, and a community room.

Early childhood programs

Stapleton Library, Staten Island

"I appreciate the new library so much. It's in the community and for the community."

ALIYAH JEFFRIES

Aliyah, the mother of two young sons, was eager for Stapleton Library to reopen. Now every week, she brings her boys to borrow books and attend story hours with other neighborhood kids.

Robert Gibbs, Stapleton's Library Manager, says that the branch has attracted record numbers of users since it reopened—particularly kids and teens and patrons seeking computer access. The weekly story hours for babies and toddlers are popular with young families in the neighborhood. "Stapleton is a beacon for so many people," says Gibbs. "It's the community's home away from home."

This project was made possible with funding provided by the City of New York, Mayor, Speaker, New York City Council, Staten Island Borough President, the State of New York, and Virginia James.

\$250 million

Total amount of capital upgrades currently underway across NYPL

Free Programs for All Ages at Neighborhood Libraries

NEARLY 1 MILLION people attended the more than 60,000 programs that NYPL offered across its locations last year. The numbers mark the third straight year of increased programming as the Library continues to expand its much-needed offerings for users from infants to seniors.

Several of the Library's recently renovated branches, including Grand Concourse, High Bridge, and Kingsbridge in the Bronx, saw especially dramatic jumps

in attendance. For example, at High Bridge, program attendance increased 275 percent.

NYPL's programs range from story hours and author readings to writing workshops and exercise classes geared to the city's growing population of users 50 and older. In addition, book discussion groups meet monthly at many locations, while others screen movies and host opera and other musical performances.

For the large numbers of unemployed or struggling New Yorkers, the Science, Business and Industry Library, as well as other sites, provides job-search assistance, personal-finance workshops, and business help for entrepreneurs.

Financial Literacy programming is made possible by the generous support of McGraw Hill Financial.



Stay Well exercise classes help students in midlife and beyond gain strength and balance.



50+ exercise classes
67th Street Library, Manhattan

“I’d never taken an exercise class like this before. It makes me feel physically and mentally fit.”

JILL BOSKOWSKY

Jill, a grandmother from the Upper East Side, has been taking NYPL’s exercise classes for seniors for two years. Thanks to the classes, she even passed the rigorous physical required to visit her son on his U.S. Navy warship.

INVESTING IN OUR COLLECTIONS

Sharing Our Research with the Public

FROM ITS FOUNDING, The New York Public Library has been dedicated to collecting a variety of materials and making them accessible to the public.

In the past year, the Library has mounted more than two dozen exhibitions at three of its research centers—the Stephen A. Schwarzman Building, the Library for the Performing Arts (LPA), and the Schomburg Center for Research in Black Culture.

Since its opening in June 2012, the NYPL’s major exhibition at the Schwarzman Building, *The ABC of It: Why Children’s Books Matter*, has drawn more than 150,000 visitors. Featuring 200 items from the Library’s collections, the exhibition celebrates children’s literature across cultures and time.

Other highlights included a multimedia display on the history of flamenco music and dance at LPA and exhibitions dedicated to masters of 20th-century painting and photography at the Schomburg Center.

Two short-term “pop-up” exhibitions on display last summer drew enthusiastic crowds. For

the three days leading up to the July 4 holiday, the Library mounted *Foundations of Freedom*, which featured two of the country’s great documents: an original copy of the Bill of Rights and a copy of the Declaration of Independence in Thomas Jefferson’s hand. More than 16,000 people flocked to see the NYPL treasures—which aren’t displayed often for preservation reasons.

In August, the Schomburg Center commemorated the 50th anniversary of the March on Washington with another popular short-term exhibit. The display featured historical buttons, photographs, and *The Negro Motorist Green Book*—a guide for African-American travelers designed to help them travel around the country safely.

In addition to displaying its treasures, the Library continues to acquire new materials for its research collections through purchases and gifts. Recent notable acquisitions include letters by authors Jack Kerouac and George Bernard Shaw and the designs of Broadway costume designer Carrie Robbins.

16,288

Number of people who visited the special three-day *Foundations of Freedom* exhibition at NYPL



Visitors lined up to see the Bill of Rights and the Declaration of Independence in July.

Support for The New York Public Library’s Exhibitions Program has been provided by Celeste Bartos, Sue and Edgar Wachenheim III, Mahnaz Ispahani Bartos and Adam Bartos Exhibitions Fund, and Jonathan Altman.

Additional exhibitions are made possible by the continuing generosity of Miriam and Ira D. Wallach.

Additional support for The ABC of It has been provided by the Bertha and Isaac Liberman Foundation, Inc., in memory of Ruth and Seymour Klein.

Additional support for the exhibition of the Bill of Rights is made possible by The Sue and Edgar Wachenheim III Foundation.

The New York Public Library for the Performing Arts gratefully acknowledges the leadership support of Dorothy and Lewis B. Cullman. Additional support for exhibitions has been provided by Judy R. and Alfred A. Rosenberg and the Miriam and Harold Steinberg Foundation.

Schomburg Center programs and exhibitions are supported in part by the City of New York; the State of New York; the New York City Council Black, Latino and Asian Caucus; the New York State Black, Puerto Rican, Hispanic and Asian Legislative Caucus; the Rockefeller Foundation Endowment for the Performing Arts; and the Annie E. and Sarah L. Delany Charitable Trusts.



High school student Moin Ahmed, who is originally from Bangladesh, relies on Countee Cullen Library in Harlem for everything from study guides to comic books.

More Books for Library Users

IN ADDITION to collecting research materials, NYPL maintains its commitment to investing in free books and materials for all users even as it expands educational and technological resources across the system.

This year, the Library added nearly 900,000 books and nonprint items to its circulating collections, including an increased supply of study guides for students, college-prep books for teens, and computer manuals and English primers for students in computer and ESOL classes to keep pace with demand. The Library also continually bolsters its catalog of classics and bestsellers.

The majority of NYPL's materials are in English, but thousands of titles are available in 16 other languages, led by Spanish, Chinese, and Russian.

Recently, selected branches in areas with large populations that speak and read foreign languages made further efforts to share an array of NYPL materials with those communities.

Investing in New Formats

Along with investing in books and other printed materials, the Library is dedicated to increasing its electronic resources. In the past four years, NYPL has quadrupled its budget for circulating e-books, and now acquires approximately 45,000 copies of e-books a year. Most e-book readers choose fiction rather

45,000

Number of e-books NYPL adds to its collections every year

than nonfiction, though self-help and business books are growing in popularity.

NYPL has also established itself as a leading advocate for increased access to e-books for libraries. Last year, the Library worked with major publishers to make sure more titles are available to libraries across the U.S. Recently, NYPL helped launch the **ReadersFirst** initiative—which now represents nearly 300 library systems—to lobby for library users to have the same free, open, and easy access to e-books as they have to print materials.

Books and study guides
Countee Cullen Library, Manhattan

“Without the Library, I don’t think I would have passed the Regent’s Algebra exam.”

MOIN AHMED, 15

Moin, a high school sophomore who moved to Harlem from Bangladesh three years ago, uses the Library’s growing collection of test-prep books to prepare for his end-of-year exams.

BOARD OF TRUSTEES

The New York Public Library

Fiscal Year 2013



BENEFACTOR
1948 -

WILLIAM NELSON
THOMAS W.
MARY C. TH
LUCIUS WIL
THE VINCENT ASTO
THE CARNEGIE CORPOR
THE ROCKEFELLE
MARY S. HA
GEORGE ARENT
MORRIS H
H. SYLVIA A. F
LILY O. PFO
CARL H. PFO
MRS. SIMON G
LOUIS MAYER
EMMA DEAN
MORTIMER AND A
CLEVELAND H. DODGE
JOHN R. S
MABEL HERBE
LATHROP COLG

BOARD OF TRUSTEES AS OF DECEMBER 31, 2013

Board of Trustees of The New York Public Library

John H. Banks III
John P. Birkelund*
Samuel C. Butler*
Sila M. Calderón
Evan R. Chesler
Joan Hardy Clark*
Sol Neil Corbin*
Lewis B. Cullman*
Robert Darnton
Gordon J. Davis
Anne E. de la Renta
James H. Duffy*
H.R.H. Princess Firyal
Barbara G. Fleischman*
Henry Louis Gates, Jr.
Barbara Goldsmith*
William Gray
Alan C. Greenberg*
Louise L. Grunwald
John H. Gutfreund*
Ralph E. Hansmann*
John B. Hess
Mahnaz Ispahani Bartos
Patricia D. Klingenstein*
Robert Liberman
Scott D. Malkin
Victor Marrero
Catherine C. Marron
Harold W. McGraw III
Raymond J. McGuire
Robert B. Menschel*
Abby S. Milstein
Susan Morgenthau
Toni Morrison*
Suzanne C. Mueller*
Susan M. Newhouse*
Jessye Norman
Carl H. Pforzheimer III*
Richard L. Plepler
Harold Prince*
Katharine J. Rayner
David Remnick
Elizabeth Rohatyn◇
Marshall Rose◇
Sandra Priest Rose*
Neil L. Rudenstine◇

Stephen A. Schwarzman
Robert B. Silvers*
Dinakar Singh
Gayfryd Steinberg
Joshua L. Steiner
James S. Tisch
Calvin Trillin*
Luis A. Ubiñas
Edgar Wachenheim III◇
Sue Ann Weinberg*

Ex-Officio Trustees

Anthony W. Marx
President and Chief Executive Officer

The Honorable
Michael R. Bloomberg
Mayor of the City of New York

Marjorie B. Tiven
Mayor's Representative

The Honorable
Christine C. Quinn
Speaker of the City Council of New York

Peter Rider
Speaker's Representative

The Honorable John C. Liu
Comptroller of the City of New York

Leigh M. Miller
Comptroller's Representative

Honorary Trustees

Kenneth S. Axelson
Timothy Barakett
Donald M. Blinken
Edgar Bronfman, Jr.
Barry Diller
Robert R. Douglass
Andreas C. Dracopoulos
Vartan Gregorian
Conrad K. Harper
Roger Hertog
Paul LeClerc
John P. Mascotte
Hamish Maxwell

Henry A. McKinnell
Stanley G. Mortimer III
Diane S. Ravitch
Richard E. Salomon
Stephen Stamas
Alfred R. Stern
Tom Wolfe

Presidents Emeriti

Vartan Gregorian
Paul LeClerc

Chairmen of the Board Emeriti

Samuel C. Butler*
Catherine C. Marron
Elizabeth Rohatyn◇
Marshall Rose◇

* Life Trustee
◇ Foundation Trustee

Officers

Neil L. Rudenstine
Chairman of the Board

Abby S. Milstein
Evan R. Chesler
Vice Chairmen of the Board

Evan R. Chesler
*Chairman, Executive Committee of
the Board*

Anthony W. Marx
President and Chief Executive Officer

Jane Aboyou
*Vice President and
Chief Technology Officer*

Jacqueline F. Bausch
*Vice President, Deputy General Counsel,
and Assistant Secretary*

Todd M. Corbin
Chief Investment Officer

Anne L. Coriston
Vice President for Public Service

Mary Lee Kennedy
Chief Library Officer

Michele Coleman Mayes
*Vice President, General Counsel,
and Secretary*

George D. Mihaltzes
*Vice President for Government
and Community Affairs*

David G. Offensend
*Chief Operating Officer,
Chief Financial Officer, and Treasurer*

Joanna M. Pestka
*Vice President for Capital Planning
and Construction*

James Pisaniello
*Vice President for Facilities Operations
and Security*

Jeffrey Roth
*Vice President, Finance and Strategic
Initiatives, and Assistant Treasurer*

Louise Shea
Vice President, Human Resources

Ann D. Thornton
*Andrew W. Mellon Director of
The New York Public Libraries*

Kenneth N. Weine
*Vice President for Communications
and Marketing*

Jennifer Zaslow
Vice President for Development

COMMITTEES

Executive Committee

Evan R. Chesler, *Chairman*
Anne E. de la Renta
William Gray
Louise L. Grunwald
Mahnaz Ispahani Bartos
Robert Liberman
Scott D. Malkin
Victor Marrero
Catherine C. Marron
Raymond J. McGuire
Abby S. Milstein
Katharine J. Rayner
Elizabeth Rohatyn
Stephen A. Schwarzman
Gayfryd Steinberg
James S. Tisch
Luis A. Ubiñas
Edgar Wachenheim III
Anthony W. Marx, *ex officio*
Neil L. Rudenstine, *ex officio*

Audit Committee

Victor Marrero, *Chairman*
John H. Banks III
Gordon J. Davis
Carl H. Pforzheimer III
Leigh M. Miller, *ex officio*
Neil L. Rudenstine, *ex officio*

Capital Planning and Facilities Committee

Robert Liberman, *Chairman*
Samuel C. Butler
Gordon J. Davis
Patricia D. Klingenstein
Harold W. McGraw III
Abby S. Milstein
Anthony W. Marx, *ex officio*
Neil L. Rudenstine, *ex officio*

Compensation and Talent Development Committee

William Gray, *Co-Chairman*
Raymond J. McGuire,
Co-Chairman
Evan R. Chesler
Edgar Wachenheim III
Neil L. Rudenstine, *ex officio*
Marjorie B. Tiven, *ex officio*

Development Committee

Anne E. de la Renta, *Co-Chairman*
Scott D. Malkin, *Co-Chairman*
Samuel C. Butler
Joan Hardy Clark
Louise L. Grunwald
Susan Morgenthau
Richard L. Plepler
Gayfryd Steinberg
Anthony W. Marx, *ex officio*
Neil L. Rudenstine, *ex officio*
Olga Votis, *non-trustee advisor*

Finance Committee

James S. Tisch, *Chairman*
John H. Banks III
Samuel C. Butler
John B. Hess
Abby S. Milstein
Susan Morgenthau
Carl H. Pforzheimer III
Anthony W. Marx, *ex officio*
Leigh M. Miller, *ex officio*
Neil L. Rudenstine, *ex officio*

Investment Committee

Edgar Wachenheim III, *Chairman*
John P. Birkelund
Samuel C. Butler
Dinakar Singh
Nancy Donohue, *non-trustee advisor*
Anthony W. Marx, *ex officio*
Neil L. Rudenstine, *ex officio*

Nominating Committee

Stephen A. Schwarzman,
Co-Chairman
Luis A. Ubiñas, *Co-Chairman*
Anne E. de la Renta
Scott D. Malkin
Richard L. Plepler
Katharine J. Rayner
David Remnick
Elizabeth Rohatyn
Anthony W. Marx, *ex officio*
Neil L. Rudenstine, *ex officio*

Program and Policy Committee

Mahnaz Ispahani Bartos,
Co-Chairman
Abby S. Milstein, *Co-Chairman*
Robert Darnton
James H. Duffy
H.R.H. Princess Firyal
Barbara G. Fleischman
Henry Louis Gates, Jr.
Barbara Goldsmith
Susan Morgenthau
Carl H. Pforzheimer III
Katharine J. Rayner
Sandra Priest Rose
Robert B. Silvers
Calvin Trillin
Sue Ann Weinberg
Anthony W. Marx, *ex officio*
Leigh M. Miller, *ex officio*
Peter Rider, *ex officio*
Neil L. Rudenstine, *ex officio*
Marjorie B. Tiven, *ex officio*

LEADERSHIP COMMITTEES

The President's Council

Louise L. Grunwald, *Co-Chair*
Gayfryd Steinberg, *Co-Chair*
Alice Tisch, *Co-Chair*

Library Council

Susan Morgenthau,
Co-Chairman
Olga Votis, *Co-Chairman*
Jesse Angelo
Elizabeth Beier
Claire Benenson
Lisa Blau
Merilee Bostock
Ann Brashares
Lea Brokaw
Jonathan Burnham
Cecily M. Carson
Joan Hardy Clark
Virginia Coleman
Cécile David-Weill
Sharon Davis
Susan Fales-Hill
Amanda Foreman
Edward L. Gardner
Louise Grunwald
Samhita Jayanti
Jennifer Joel
Katherine Kend
Beth Kojima
Jane Lauder
Carol Sutton Lewis
Robert MacNeil
Scott Malkin
Hermes Mallea
Carey Maloney
Elyse Newhouse
Andrea Olshan
Hannah Pakula
Katharine Rayner
Gretchen Rubin
Fiona Rudin
Aysha Schomburg
Andrew Solomon
Gayfryd Steinberg
Jeffrey Toobin
Amanda Waldron

Darren Walker
Caroline Weber
Tali Weinstein
William Wright
Linda Yablonsky
Richard Zinman
Caryn Zucker

Financial Services Leadership Forum Advisory Committee

Claire B. Benenson,
Co-Chairman
Judith R. Ehrlich, *Co-Chairman*
Leslie D. Toepfer, *Co-Chairman*
Lewis B. Cullman, *Honorary Chairman*
Henry Arnhold
Leslie Bains
Andrew M. Blum
Samuel C. Butler
Hon. William H. Donaldson
Louis V. Eccleston
Harold Ehrlich
William Freda
Roy L. Furman
Edward L. Gardner
Leslie V. Godridge
Alan C. Greenberg
Maurice R. Greenberg
Edward S. Hyman
Henry P. Johnson
Ann Kaplan
Todd Lang
Alexandra Lebenthal
Sid Lerner
Catherine Marron
William J. McDonough
Harold McGraw III
Doris P. Meister
Douglas L. Peterson
Peter G. Peterson
Laura Resnikoff
Paul Schreiber
Daniel H. Stern
Edgar Wachenheim III
Lulu C. Wang
Hon. John C. Whitehead

Committee for the Jerome Robbins Dance Division

Elizabeth O'Brien, *Chairman*
Perry Granoff, *Vice Chairman*
William H. Wright, II, *Vice Chairman*
Peter Kayafas, *Secretary*
Allen Greenberg, *Treasurer*
Theodore S. Bartwink
Sallie Blumenthal
Dr. Jeffrey S. Borer
Arlene C. Cooper
James Duffy
Hubert Goldschmidt
Caroline Hyman
Kate Lear Lapook
Nancy N. Lassalle
Madeleine M. Nichols
Meg Stillman
Jean Sulzberger
Helen Wright

Advisory Council

Danielle Castronovo
Jacqueline Z. Davis
Genevieve Oswald
Jan Schmidt
Alexander Schouvaloff

Friends of the Jerome Robbins Dance Division

Anne H. Bass, *Co-Chair*
Caroline Cronson, *Co-Chair*

Honorary Members

Merrill Ashley
Mikhail Baryshnikov
Peter Boal
Holly Brubach
Darcey Bussell
Angel Corella
Jacques d'Amboise
Suzanne Farrell
Alessandra Ferri
William Forsythe
Cynthia Gregory
Paloma Herrera

Barbara Horgan
Allegra Kent
Julie Kent
Lourdes Lopez
Natalia Makarova
Patricia McBride
Kevin McKenzie
Benjamin Millepied
Arthur Mitchell
Mark Morris
Gillian Murphy
Kyra Nichols
Nancy Reynolds
Francia Russell
Suki Schorer
Ethan Stiefel
Kent Stowell
Paul Taylor
Helgi Tomasson
Violette Verdy
Edward Villella
Karin von Aroldingen
Heather Watts
Robert Weiss
Christopher Wheeldon
Wendy Whelan
Damian Woetzel

Lawyers for the Library Committee

Evan R. Chesler, *Chairman*
John A. Bick
William H. Bradley
Samuel C. Butler
Michael H. Byowitz
H. Rodgin Cohen
Christopher T. Cox
Barry H. Garfinkel
Jonathan Goldstein
Peter L. Malkin
Philip T. Ruegger III
Richard A. Spehr



DARING METHODS The Prints of Mary Cassatt



FREE EXHIBITION
March 8–June 23, 2013

The New York Public Library
Stephen A. Schwarzman Building
Fifth Avenue and 42nd Street
Print and Stokes Galleries, Third Floor



NYPL.ORG



This exhibition has been made possible by the continuing generosity of Helene and Dr. D. Harold, Support for The New York Public Library's Exhibitions Program has been provided by United Bankers, Citic and Edgar, Macomber & Co., Arthur S. Hays Sulzberger and Anne Harris Sulzberger Fund, and numerous donors.

An exhibition of prints by Mary Cassatt at the Schwarzman Building displayed works from the American artist's 20-year career working in the medium.

LGBT Initiative

Hermes Mallea, *Co-Chairman*

Carey Maloney, *Co-Chairman*

Rita Mae Brown,

Honorary Co-Chairman

Tony Kushner,

Honorary Co-Chairman

Edmund White,

Honorary Co-Chairman

Planned Giving Advisory Board

Jan S. Adams

Rozlyn Anderson

Paul Beirne

Amy G. Bermingham

Beverly Fanger Chase

Henry Christensen III

Lewis B. Cullman

Judy Daniels

William A. Dreher

Pamela Ehrenkrantz

Ralph E. Hansmann

T. Randolph Harris

Katherine C. Hastings

Colleen Jones

Gerard F. Joyce, Jr.

Mildred Kalik

Jonathan L. Koslow

Jayne M. Kurzman

Lawrence M. Lipoff

Jennifer Jordan McCall

Neal P. Myerberg

Gloria S. Neuwirth

John C. Novogrod

John J. O'Neil

Carl H. Pforzheimer III

Peter B. Phelan

David E. Ratcliffe

Jonathan J. Rikoon

Joshua S. Rubenstein

Eileen Caulfield Schwab

Sandra T. Shell

Peter Slater

Barbara A. Sloan

Burt Allen Solomon

Robert D. Taisey

Marissa Tracey

Jay D. Waxenberg

Sandra S. Weiksner

Ruth Rosenfeld

Benita Watterworth

Elayne Weinstein

Young Lions Committee

Nicholas T. Brown,

Co-Chairman

Kristin Fisher, *Co-Chairman*

Ben Loehnen, *Co-Chairman*

Wes Anderson

Amanda McCormick Bacal

Emma Bloomberg

Elizabeth Cebron

Sloane Crosley

Nell Diamond

Louis V. Gerstner, III

Maggie Gyllenhaal

Uzodinma Iweala

Samhita A. P. Jayanti

Jennifer S. Joel

Michael T. Jones

Andrew Klaber

Beth Kojima

Jennifer 8. Lee

Elissa Lumley

Chloe Malle

Karen Mulligan

Andrea Olshan

Marisha Pessl

Sangeetha Ramaswamy

Zibby S. Right

Elizabeth Ross

Morwin Schmookler

Rohit Singh

Andrew Ross Sorkin

Louisa Thomas

Jessica S. Tisch

Nina von Moltke

Cristina Alger Wang

Pam Wasserstein

Ashley H. Wick

AS OF JUNE 30, 2013

Volunteers of The New York Public Library, The Volunteer Council

Executive Committee

Keith Glutting, *Chairman*

Robyn Newmyer,

Vice Chairman—Secretary

Helene Kline,

Vice Chairman—Treasurer

Sherrel Bader,

Vice Chairman-at-Large

Yvonne Seck,

Vice Chairman-at-Large

Calvin Bass

Samantha Biro

Peter Boysen

Mary Butler

Barbara Fleischman

Shirley Glaser

Ellen K. Jacobs

Claudia Justy

Margaret K. Kable

Pat Klingenstein

Sarah Lesser

Marie Lunn

Priscilla Matouk

Carmen Matthew

Catherine Ortiz

Natalie Pergam

Patricia Pickering

Trudy Reitz

Aida Roman

DONORS AS OF JUNE 30, 2013

A SPECIAL THANKS TO OUR DONORS

We are deeply grateful to donors at every level, all of whom make it possible for The New York Public Library to continue the essential services that people in New York, across the nation, and around the world count on every day.

INDIVIDUAL AND FOUNDATION GIFTS

Gifts, New Pledges, and Payments toward Previous Pledges of \$1,000 or more made from July 1, 2012 through June 30th 2013, with the exception of gifts made toward benefit events.

Donors of \$5,000,000 or More

Anonymous
Estate of Mary McConnell Bailey
Trust of Helen Gurley Brown
Roger and Susan Hertog
Scott and Laura Malkin
Howard and Abby Milstein
The Carl and Lily Pforzheimer Foundation, Inc.
Katharine Johnson Rayner
Mr. and Mrs. Stephen A. Schwarzman
Steiner/Linder Family
Mrs. John L. Weinberg
The Robert W. Wilson Charitable Trust

Donors of \$1,000,000 to \$4,999,999

Estate of Brooke Russell Astor
Claire B. and Lawrence A. Benenson
Mr. and Mrs. John P. Birkelund
Mr. and Mrs. Samuel C. Butler
Carnegie Corporation of New York
Lois M. Collier
Anne E. de la Renta
James H. Duffy
E.H.A. Foundation, Inc.
Estate of Selma B. Geller
Hermione Foundation
The JPB Foundation

Beth and Christopher Kojima
Mr. and Mrs. Robert Liberman
The Samuel I. Newhouse Foundation
The Pasculano Foundation
Marshall Rose
Eric and Erica Schwartz
Marilyn and Jim Simons
Joseph and Sylvia Slifka Foundation, Inc.
Sue and Edgar Wachenheim III

Donors of \$500,000 to \$999,999

Estate of George and Edna Both
The Carson Family Charitable Trust
Ann Kaplan
Arthur W. Koenig
The Polonsky Foundation
Estate of Clare Skaling
Estate of Leona Sobel
Judith and Stanley Zabar

Donors of \$250,000 to \$499,999

Anonymous
Estate of Steven Feld
Estate of Patricia Lauber Frost
Estate of Adele Dembiec Gehler
Barbara Goldsmith Foundation
Mr. and Mrs. Arnold M. Goldstein
Estate of Kenneth David Huszar
Estate of Clifford Jackson
Estate of Elinor Plimack
Charles H. Revson Foundation
Estate of Helen K. Schwartz

Donors of \$100,000 to \$249,999

Estate of Muriel Allinson
Altman Foundation
Estate of Calvin Artke

Mahnaz Ispahani Bartos and Adam Bartos
Estate of Elizabeth Emma Basch
Anne H. Bass
Estate of Mary Frances Bridge
Estate of Lorraine Budny
Joan Hardy Clark
Estate of Thais Cohrone
Merce Cunningham Trust
Estate of Patricia Reynolds DeAngelis
Estate of Doris Firestone
Friends of Webster Library
Estate of Anthony Geiss
Estate of Louis Gersten
The Gilder Lehrman Institute of American History
Good Samaritan, Inc.
William Gray and Diana Romney Gray
The Rona Jaffe Foundation
Virginia James

Marion Kahn Charitable Lead Trust
Estate of George Knotte
The 2011 Karen K. Krueger Fund
The Andrew W. Mellon Foundation
Estate of Dorothy Klein Mosheim
The Pinkerton Foundation
Pitts Family Foundation
Cherie Henderson and David Poppe
Robbins Rights Trust
The Jerome Robbins Foundation, Inc.
Mr. and Mrs. Felix G. Rohatyn
The Morris and Alma Schapiro Fund
Single Stop USA
The Harold and Mimi Steinberg Charitable Trust
Mr. and Mrs. James S. Tisch
The Winston Foundation



Jefferson Market Library's second-floor reading room features beautiful stained-glass windows and copious natural light.

Donors of \$50,000 to \$99,999

Anonymous
The Aeroflex Foundation and Hippocampus Press
Agus Family
Helen and Roger Alcaly
Arcadia Fund
The Arts and Letters Foundation
Scott and Roxanne Bok
Bostock Family Foundation
Ben F. Bryer Foundation
The Honorable Anne Cox Chambers
The William and Dewey Edelman Charitable Trust, Kenneth L. Stein, Trustee
Epstein Teicher Philanthropies
Estate of Nazmiye S. Erkmen
Ruby B. Fleming Trust
Estate of George Fruhman
Estate of Margaret B. Gloster
Estate of Carmen Gorsky
Estate of Alfred Gregoritch
The Marc Haas Foundation
Mr. and Mrs. John Klingenstein
Ivor Kraft
Estate of Dorothy A. Lander
Estate of Rose Landres
The Mayor's Fund to Advance New York City
Raymond J. McGuire
The Ambrose Monell Foundation
Henry and Lucy Moses Fund, Inc.
Oceanic Heritage Foundation
Sandra Priest Rose
Estate of Helen B. Sheldon
The Alfred P. Sloan Foundation
The Starr Foundation
Antoinette Delruelle and Joshua L. Steiner
Dr. Steven Ungerleider and Global Sports
Mary Ellen von der Heyden
Mr. and Mrs. George T. Votis
Sidney J. Weinberg, Jr. Foundation



TechConnect computer classes at Chatham Square Library are offered in Mandarin and English.

Donors of \$25,000 to \$49,999

Anonymous
Debbie and Glenn August
Timothy and Michele Barakett Foundation
The Barker Welfare Foundation
The David Berg Foundation, Inc.
Estate of Charles Berman
Lisa J. and Jeff Blau
Estate of Jay L. Bright
Mr. and Mrs. Evan R. Chesler
Steven A. Cohen and Alexandra M. Cohen Foundation, Inc.
Barbara and Joseph Ellis
Jacqueline Fowler
The Fribourg Family
Arlyn and Edward Gardner
Louis V. Gerstner III
The Jean and Jula Goldwurm Memorial Foundation
Stephen and Cathy Graham
Joan Granlund
Kathryn and Alan C. Greenberg
Estate of Bernice Grohskopf
Mrs. Henry A. Grunwald
Agnes Gund

The Hagedorn Fund
Rhoda R. Herrick
Marlene Hess and James D. Zirin
Carl Jacobs Foundation
Ann and Michael Jenkins
Michael T. M. Jones and Dana Wallach Jones
Ann Kaplan and Robert Fippinger
William W. Karatz
Mr. and Mrs. Peter Kend
Estate of E. Valerie Klaus
Charitable Lead Trust under the Will of Evelyn Lauder
Estate of Henrietta Levner
Estate of Frances M. Lurrie
Isabel and Peter L. Malkin
Hermes Mallea and Carey Maloney
Estate of Jack and Ruth Marcus
Mr. and Mrs. Donald B. Marron
The Louis B. Mayer Foundation
Peter A.B. Melhado
Robert B. Menschel

Edward & Sandra Meyer Foundation
Susan and Robert Morgenthau
Elyse and Michael Newhouse
Susan and Donald Newhouse
Kate and Robert Niehaus
Lynne and Richard Pasculano
Pine Tree Foundation of New York, Inc.
Estate of Baylis Frank Poe, Jr.
Mr. and Mrs. William P. Rayner
Research Foundation of the City University of New York
Darcy and John Rigas
The David Rockefeller Fund
Daniel and Joanna S. Rose
Estate of Lillian G. Rosenfeld
Richard Roth Foundation
The Fan Fox and Leslie R. Samuels Foundation, Inc.
Mr. and Mrs. Eric P. Sheinberg
The Shubert Foundation, Inc.
Ann M. Spruill and Daniel H. Cantwell
Barbara H. Stanton
Starry Night Fund

Michael and Joan Steinberg
Mrs. Saul Steinberg
Solon E. Summerfield
Foundation, Inc.
The Buddy Taub Foundation,
Dennis A. Roach and Jill Roach,
Directors
Katrina vanden Heuvel
Mary J. Wallach
Estate of Joseph Winokur
Anthony and Nanar Yoseloff

Donors of \$1,000 to \$24,999

Anonymous
1000 Wishes in honor of
Andi Rugg
Susan Abanor and Harold S.A.
Woolley
Diane and Arthur Abbey
Joseph and Sophia Abeles
Foundation
Lynn and Seth Abraham
Ronnie and Lawrence D.
Ackman

The Acorn Foundation for the
Arts & Sciences, Inc.
Actors' Equity Foundation, Inc.
Margot Adams
Mr. and Mrs. J. David Adler
Arun R. Adya in memory of
Surekha Adya
Lolita Albers in memory of Carl
W. Albers
Arlene and Alan Alda
Louis Aledort
Josephine R. Alger
Barbara Allen
Harold Peter Allen
Mariette Pathy Allen
The Anbinder Family
Foundation
Kathleen S. Andersen
Velma Anderson
Jesse Angelo
Alex Apsis
Henry H. Arnhold–Arnhold
Foundation
Paulette Arnold
Maria L. Arroyo-Herencia

Ellen L. Asher
E. Nelson Asiel
Janet Jeppson Asimov
The Atlantic Philanthropies
Director/Employee
Designated Gift Fund
Atran Foundation, Inc.
Gillian Attfield
Tracy Austin
Kenneth and Roberta Axelson
Family Fund of the Maine
Community Foundation
Babbitt Family Charitable Trust
Walt and Elizabeth Bachman
John Banks III and Lisa Gomez
Randall J. and Virginia N.
Barbato
Norman Barham
Martin and Rhoda Barr
Mark Barres
Francis P. Barron and Eve B.
Sundelson
The Theodore H. Barth
Foundation, Inc.
Theodore S. Bartwink

Nan Bases in memory of Joseph
and Muriel Bases
James Basker
Daphne Baxter
The Bay and Paul Foundations
The Howard Bayne Fund
Susan Beckerman
Estelle Beckson
David Beer
Elizabeth Beier
Evelyn Benjamin
Wayne Benjamin
John P. Bent, Jr.
Alex Berenson
Mr. and Mrs. Raphael Bernstein
Kathlyn J. Berry
Rajeev Bhaman and Sumangala
Prabhu
Bialkin Family Foundation
Dr. Stanton F. Biddle
Clara Bingham
Joan Bingham
Samantha Biro
Deanna Bittker
Jessica and Jeremiah Blatz



Students visited a special exhibition at the Schomburg Center for Research in Black Culture commemorating the 150th anniversary of the preliminary Emancipation Proclamation. The display included Abraham Lincoln's handwritten draft of the document.

This exhibition was organized by Board of Regents, The New York State Education Department, Dr. Merryl H. Tisch, Chancellor; New York State Museum; New York State Library; New York State Archives; Schomburg Center for Research in Black Culture; The New York Public Library; and National Archives and Records Administration.

The Schomburg Center for Research in Black Culture is grateful to the James S. and Merryl H. Tisch Foundation for its generous support of the anniversary celebration and exhibition-related programming.

Emma B. Bloomberg and Christopher Frissora	Kenneth H. Chase Amanda Chen	Ellen M. Deibert and Michael J. Quinn	Glenn Enoch Nora Ephron and Nicholas Pileggi Foundation
Blum-Merians Foundation, Inc.	Hui Y. Chen	Estate of Michael De Lisio	Sharon Esakoff
Robert L. Bolling	Diane M. Chesnut	The Gladys Kriebel Delmas Foundation	Martha Escobar
Mildred D. Booker	Jan Clarke	Marie de Lucia and Lee Solot	Don Eugene
Dr. and Mrs. Jeffrey S. Borer	Jane E. Clifford	Carol Dempster	Catherine E. Eulau
Heather Boyd	Margot P. Close	Christine Denham and Robert Stein	Mr. and Mrs. John Evangelakos
Francele and George T. Boyer	Fern and Hersh Cohen	Elisabeth de Picciotto	Dr. Deborah Matthews Evans
James R. Breckenridge	Jonathan L. Cohen	Elizabeth DeRosa	Sheldon Evans and Martha McMaster
Edna L. Breecker	Monica and Jeff Cohen	David and Alvin Deutsch	Robert Evelyn
Shira E. Bressler	Dr. and Mrs. Noel Cohen	Ellen and Pierre de Vegh	Robert and Margaret Fagenson
The Briar Foundation	Robert and Marilyn Cohen	David De Weese	Fleur Fairman
Estate of Cornelia Hunt Broadie	Barbara and Bertram J. Cohn	Beth Rudin DeWoody	Linda Fairstein
Herve Bronnimann	Theodore and Alice Cohn	The Dex Family Foundation	Jody Falco and Jeffrey Steinman
Constance A. Brown	Stuart H. Coleman	Hester Diamond	Deborah Brightman Farone
Elizabeth A.R. and Ralph S. Brown, Jr.	Ronald and Roberta Columbus	Ruth Dickler	Mary Faucher
Estate of Helen Marie Brown	John M. Conklin	Cleveland H. Dodge	Helen Bernstein Fealy
Karin Brown	Estate of Charlotte L. Cooke	Foundation, Inc.	Florence Fearington
Nick Brown	Arlene C. Cooper	Daniel L. Dolgin and Loraine F. Gardner	Ruth M. and Arthur A. Feder
Valerie Brown	Ellen Cooper in memory of Magnolia Sibley-Wilson	Vivian Donnelley	Linda Keithan Fein and family in memory of Donald Sobol
Gloria J. Browner	Paula Cooper and Jack Macrae	Eugenia G. Dooley	Maurice and Carol Feinberg Family Foundation
Clyde and Diane Brownstone	Rebecca Cooper	Andrea Dorfman	Yoseph Feit
D.J.R. Bruckner	Alison and Todd M. Corbin	The Double-R Foundation	Catherine S. Felleman
Jerome Bruner	Mrs. Daniel Cowin	Dr. and Mrs. Frank L. Douglas	Priscilla P. Ferguson
Estate of Anne Turner Bruno	The Cowles Charitable Trust	Jean Douglas	Edward and Paula Fichtner
Sander and Norma K. Buchman Fund	Benjamin F. Crane	Joyce Doyle	Dr. Jessie A. Fields
Reverend C. Frederick and Judith M. Buechner	Lynn Crimando	Jean and Louis Dreyfus Foundation	Elinor Tomback Fine
Estate of Elsa A. Burrows	Catherine Crimmins	Rebekah Driscoll	Sophia G. Finger
Eric and Cynthia Butler	Lewis B. Cullman	Jacqueline H. Dryfoos	The Finkelstein Foundation
Ildiko Butler	Susan R. Cullman and John J. Kirby	Rita Duggan	Alina Fisch
Nina Bykow	The Nathan Cummings Foundation	Estate of Hannah Stewart Duncan	Kristin Fisher and Charles M. Allen
Mary Cademartori	Francesca M. Curtin	Joan and Wolcott B. Dunham, Jr.	Wendy R. Flanagan
Yvonne T. Cappello	Nancy Dalva, Merce Cunningham Trust Scholar	Joan Dyer	Evan Flecker
Robert and Patricia Carey	Judy and Aaron Daniels	The Edelman Foundation	Barbara G. Fleischman
Chester and Dorris Carlson Charitable Fund	Peggy and Richard M. Danziger	Elizabeth E. Ehrenfeld	Martha J. Fleischman
Brenda and Kenneth Carmel	Robert and Susan Darnton	Heyward Ehrlich	Estate of Frederick G. Flersheim
Franklin J. Carmel	Gordon J. and Peggy C. Davis	Judith and Harold B. Ehrlich	Fletcher Foundation
Kathryn Carr	Sharon and Christopher C. Davis	Julie C. Eichenberger	Margaret and Howard Fluhr
William Carroll	Suzanne Davis and Rolf Ohlhausen	Dr. Kenneth Eisold	Ellen L. Fogle
Jean-Christophe Castelli and Lisa Silver	Richard De Christoford	Nancy and Henry Elghanayan	Penelope D. Foley
Joan Ridder Challinor	Elizabeth de Cuevas	Linda A. & James H. Ellis Fund	Connie and Theo Folz
Leslie Chang and Ben Appen	Sylvia de Cuevas	ELSAM Fund	The Ford Foundation
Michael E. Charles		Lydia Emil	Amanda Foreman and Jonathan Barton
Howard Chase		Carol Emshoff	

Edmond D. Franco
 Joele Frank and Laurence Klurfeld
 Ivy M. Fraser
 Dr. and Mrs. Preston D. Frazier
 Lynn Freedman and David Frankel
 The Freedom Forum
 Annette Freeman
 The Frelinghuysen Foundation
 Bart Freundlich in memory of Magnolia Sibley-Wilson
 Donald Fried
 Barbara Friedberg
 John Friedland
 Lee and Maria Friedlander Family Foundation
 Marilyn Friedman and Thomas Block
 Peter R. Friedman
 Sylvia Friedman
 Holly Fullam
 Marilyn Jacobs Furey
 Mr. and Mrs. Francesco Galesi
 Patricia M. and Victor F. Ganzi
 Johanna and Leslie Garfield
 William and Helen Garrison
 John D. Gatsos
 Mr. and Mrs. Theodore H. Geballe in memory of Katherine Frank

Estate of Dorothy Geller
 The Gellin-Zalaznick Foundation, Inc.
 Egon Gerard
 Jerome and Dolores Zuckerman Gewirtz Charitable Trust
 Joan and Jonathon Gillette
 Sonia Raiziss Giop Charitable Foundation
 Lisa Gitelman in memory of Claudia Gitelman
 Max and Elisabeth G. Gitter
 Edythe and Mathew Gladstein
 Rosalind and Eugene J. Glaser
 Henry P. Godfrey
 Alexandra C. and R.G. Goelet
 Alix G. Goelet
 Elmera Goldberg
 Edward and Marjorie Goldberger Foundation
 Anne B. Golden
 Jean Golden
 Sibyl R. Golden
 Estate of Fanny Goldfarb
 Constance Elaine Goding
 Estate of Anne Goldman
 Beatrice C. Goldschmidt
 Hubert Goldschmidt
 Donna Golkin
 Wendy Gorman
 Barbara Gottlieb

The Gould and Shenfeld Families
 Nathan Graber
 Mr. and Mrs. Henry F. Graff
 Yvette and Larry Gralla
 Perry B. Granoff
 Allen Greenberg
 Kimberly and Jeffrey Greenberg
 Maria S. Greene in memory of Henrietta Roberts Stevenson
 Vartan Gregorian
 The Honorable and Mrs. Thomas P. Griesa
 Susan L. Griffith and David S. Neill
 Barbara Grodd
 Patricia H. Grodd and Michael S. Stone
 The Grodzins Fund
 Mr. and Mrs. Charles H. Gross
 Mr. and Mrs. John M. Gross
 Evangelos Gustave
 Robert W. Gutman
 Warren L. Habib and Alexis P. Walker
 Bruce Noel Hadley
 Ilse Haefele
 Peter and Helen Haje
 Kathleen Diana Hale
 Mimi Halpern
 The Harburg Foundation, Inc.
 Anne and James H. Harding
 Estate of Mary F. Harkins
 The Harkness Foundation for Dance
 Harnisch Family Philanthropies
 Gerry Harper
 Mary W. Harriman Foundation
 Julie Harris
 Bishop Robert W. Harris
 Grace W. Harvey
 Ego and Cassianna Hayes
 Lenore Hecht
 Jeanne Hegner
 Kris Heinzelman
 Donald F. Heisel
 T. Walter Heiser
 Mrs. Andrew Heiskell

Jean Helling
 Helene Herzig
 Walter W. Hess, Jr.
 Marilyn Berger Hewitt
 Alison Higgins
 Elizabeth K. Hill
 Milton E. Hill
 Gladstone Hinds
 Ira S. Holder
 Roni Horn
 Estate of Chase Horton
 Mr. and Mrs. David S. Howe
 Ellen E. Howe
 Timothy Hughes
 Hugoton Foundation
 Mary and John E. Hull
 Humanist Trust
 Jeff Hunter
 Caroline Hyman
 Charles H. Hyman
 Isabelle and Jerome E. Hyman
 Warren F. Ilchman
 Gail Inaba
 Aurelia Ion
 Theodore L. Iorio
 Uday B. Ivatury and Laura H. Tolkow
 Ellen and Arnold Jacobs
 Joanne Jacobson
 The Richard & Natalie Jacoff Foundation, Inc.
 Diane E. Jaffee
 Carola Jain in memory of Magnolia Sibley-Wilson
 Karen and Peter Jakes
 Lauretta Jakobsen
 William and Weslie Janeway
 Olivier Janin
 Linda and Morton Janklow
 Ruth B. Jarmul and Irvin A. Rosenthal
 Pamela Jarvis and Anthony E. Davis
 Samhita and Ignacio Jayanti
 Ulyses Jefferson
 Jephson Education Trusts
 Jockey Hollow Foundation
 Jennifer S. Joel



All locations provide computers designated specifically for teens and children.

Carolyn N. Johnson
 Estate of Eleanor M. Johnson
 Patricia Johnson
 Phyllis La Farge Johnson
 The Robert Wood Johnson
 Foundation
 Vernon E. Jordan, Jr.
 Laurence R. Jurdem
 Margaret Kable
 Dr. David Kahn
 Emily Mason Kahn
 Dr. Norman Kahn
 The Kandell Fund
 Pat and Paul D. Kaplan
 Lauren Kasper
 Brian W. Kassenbrock
 Karen Katen
 Florence and Robert Kaufman
 Mrs. Harry L. Kavetas
 Peter Kayafas
 The Honorable Amalya L.
 Kears
 Ezra Jack Keats Foundation, Inc.
 Anna-Maria Kellen
 Estate of Dorothy Anne Keller
 Estate of Catharine Kelly
 Thomas L. Kempner
 Leona Kern
 Nizam Peter Kettaneh
 Miller Khoshkish Foundation
 Sharon Kilmer
 Stephen and Susan Kippur
 Andrew Klaber
 David L. Klein Jr. Foundation
 Virgilia and Walter Klein
 The Walter C. Klein Foundation
 Elysabeth Kleinhans
 Insoo Ko
 Trust of Barbara Karen Kohl
 John W. Kondulis
 Ling Kong
 James Koo
 Thomas Koo
 Lewis and Sharon Korman
 Estate of Leopold Koss
 Daniel R. Kramer
 Sidney & Judith Kranes
 Charitable Trust
 Dorothy and Jerome Kretchmer

Robert D. and Carol H. Krinsky
 Elroy and Terry Krumholz
 Foundation
 The Kurr Foundation
 James LaForce and Stephen G.
 Henderson
 Nanette L. Laitman
 Helen and James J. Lally
 Bill Lambert
 Peter and Deborah Lamm
 Loeber and Barbara Landau
 Charlene Landis and
 Thomas R. Leslie
 Eugene M. Lang
 Estate of Pauline T. Langer
 Ira N. Langsan & Lillian Langsan
 Philanthropic Fund
 Sterling Lanken
 Nancy N. Lassalle
 Bernard and Frances Laterman
 Marta Jo Lawrence
 Starling R. Lawrence
 Susan and David Lazarus
 Sandra Lazo and Donald H.
 Layton
 Kate Lear
 M. Carol Leber
 Paul LeClerc and Judith
 Ginsberg
 James Ledbetter
 James Hung Foo Lee
 Susan H. Lees
 Judith S. and Edwin Deane
 Leonard
 Sidney and Helaine Lerner
 Ann and Michael Lesk
 The Muriel and Norman B.
 Leventhal Family Foundation
 Phyllis Lee Levin
 Karen Levine
 Ruth and David Levine
 Saul and Natalie Levinson
 Leon Levy Foundation
 Elizabeth C. Rivers Lewine
 Endowment of Coastal
 Community Foundation of SC
 Bryon E. Lewis
 Bertha and Isaac Liberman
 Foundation, Inc.



Katharine Hepburn: Dressed for Stage and Screen, on display at the Library for the Performing Arts, included myriad costumes and the actress's own clothing. This exhibition was organized by the Kent State University Museum.

Jeremy Licht
 Dorothy Lichtenstein
 Estate of George Liker
 Mr. and Mrs. Arthur Lindenauer
 Albert Lingelbach
 Fritz and Lee Link
 The Linville Family Foundation
 Simon Z. Lipskar
 Amanda and Tom Lister
 The Lucius N. Littauer
 Foundation
 Arthur L. Loeb
 Margaret and Daniel S. Loeb
 Ben Loehnen and Peter
 Wertheim
 The Frederick Loewe
 Foundation, Inc.
 Dr. Clement B.G. London
 Estate of David J. Londoner
 Sherif Lotfi
 Lovinger Family Foundation
 Leon Lowenstein Foundation,
 Inc.
 Milton J. Lowenstein
 George and Pier Lowy
 Heather Lubov
 Joanne Lyman
 Virginia S. Lyon
 Debra Lyons
 Thomas G. MacCracken
 Robert and Donna MacNeil
 Alice L. Mairs

Jennifer Fritz Maitland
 Rachele and Anthony E. Malkin
 Barbara and J. Robert Mann, Jr.
 The Robert Mapplethorpe
 Foundation, Inc.
 Estate of Alice Maram
 Grace R. and Alan D. Marcus
 Foundation, Daniel and
 Geraldine Soba
 Benjamin Marion, Jr.
 Markle Foundation
 Lucy Marks and Scott Sprinzen
 Victor Marrero
 Donna E. Marshall
 Marsicano Foundation
 Anthony Marx and Karen
 Barkey
 The Virginia and Leonard Marx
 Foundation
 Margaret Mastrianni
 Mathis Pfohl Foundation
 Rebecca Mattoni
 Margaret P. Mautner
 Diane and Adam Max
 Estate of Appolonia Mayer
 Harriet Mayer
 Nancy Mayer
 Michele Coleman Mayes
 Elizabeth D. Mazza
 Win McCormack
 Kristin A. McDonough
 Ann McGovern Scheiner

Heather McGregor
 Amy McIntosh and Jeffrey Toobin
 Laurel J. McKee
 Maureen McNamara
 Constance and H. Roemer McPhee
 James McSpirtt
 Satyen Mehta
 Richard Meier Foundation
 In honor of Dr. W. Giles Mellon from his fellow Trustees and Reich & Tang Asset Management, LLC
 Paul R. Mendelsohn
 The Janis & Alan Menken Foundation
 Richard and Ronay Menschel
 Eugene Mercy, Jr.
 Jeffrey Metzler
 Syva Lee Meyers
 Milbank Memorial Fund
 Erin F. Miller
 Leigh and Lynden B. Miller
 Junius Mills
 Margaret Mills
 Sally Minard and Norton Garfinkle
 Dr. Lisa Shulamit Minsky-Primus

Joan Mintz and Robinson Markel
 Doris S. and Thomas J. Miree
 The Leo Model Foundation
 Gwen A. Moffat
 Jaimie Monahan
 Henriette Montgomery
 Diana MacDonald Moore
 Katherine C. Moore
 Willard S. Moore and Margaret Nelson
 Cynthia Morales
 Juliette M. Moran
 Howard L. Morgan
 Estate of Cynthiane Morgenweck
 Enid and Lester S. Morse, Jr.
 Anne and Charles Mott
 Mozilla Foundation
 Marcia Nabut
 Frances E. and Frederic S. Nathan
 National Trust for Historic Preservation
 Brooke and Dan Neidich
 Mark Nelkin
 Carol Netzer
 The New York Community Trust
 The New York Community Trust–The Ada Fund

The New York Community Trust–Henry Birnbaum Fund
 The New York Community Trust–Thomas W. and Claire W. Frank Fund
 The New York Community Trust–Suzanne C. and Carl M. Mueller Charitable Fund
 Robert & Ann Newburger Foundation
 Hope and Joshua Newman
 Madeleine M. Nichols
 John Bulica Nicholson
 Concepcion R. Nierras
 Francesca Stanfill Nye and Richard B. Nye
 Elizabeth O'Brien
 Charles John O'Byrne
 Jane O'Connor
 O'Donnell Iselin Foundation
 David G. and Janet M. Offensend
 Anita O'Gara
 Janet Olsen
 Nancy S. Olson
 Paula J. Omansky
 Abby & George O'Neill Trust
 Estate of Anna Opolska
 Paula Oppenheim
 Martin J. and Helene G. Oppenheimer
 Orentreich Family Foundation
 Sally and Michael Orr
 Nicole and Bruce Paisner
 Moses L. Parshelsky Foundation
 Portia and Basil Paterson
 Pamela Patton and Ivan Galanin
 Mr. and Mrs. Brook S. Payner
 Dr. Benjamin F. Payton
 Regina Pearlmutter
 Peck Stacpoole Foundation
 Cynthia and D. Jeffery Penney
 Amy and Joseph R. Perella
 Robin and Matthew Perkins
 Abraham Perlman Foundation, Inc.
 Mr. and Mrs. Ronald Person
 Fabienne Peyrat

Carl and Betty Pforzheimer
 Peter Phelan
 Betsy Pinover-Schiff and Edward L. Schiff
 Conni Pitti
 Justine Pokoik
 Claudia Polite
 Lisa A. Pollack
 Cynthia Hazen Polsky
 Lise Porter and Arthur R. Matin
 Dr. Robert T. Porter
 Nancy and Fred Poses
 Beth A. Potter
 Lorna Power
 Provincial Foundation
 Mitchell Rabinowitz
 Sangeetha Ramaswamy
 Dr. Raymond W. Ransom
 Roslyn Raskin
 Diane Ravitch
 Charlene Ray
 Nancy Raybin
 Neil Readwin
 Gregory Redmond
 The Reed Foundation
 Estate of Ida Reeves
 Carolyn Reidy
 Rosalind B. Resnick
 Laura B. Resnikoff
 The Karl F. Reuling Fund
 Allene Reuss Memorial Trust
 Peggy S. Rice
 John and Lynne Richards
 Fred M. Richman
 Neil C. Rifkind
 Louise and Leonard Riggio
 Andrew and Zibby Right
 Sheila Johnson Robbins in honor of Ellen Jacobs
 Kathleen Roberts
 Dr. Franklin L. Robinson
 David Rockefeller
 Steven and Barbara Rockefeller
 Rocker Family Foundation
 The Rodgers & Hammerstein Foundation
 Mary Rodgers and Henry Guettel



Young children at NYPL learn and sing songs, which helps them develop their language and memory skills.



Patrons who speak and read languages other than English can find newspapers and magazines to read at NYPL.

Sandra Rodman-Mann
Phyllis G. Roe
Elizabeth and Theodore C. Rogers
Ronald S. Rolfe
Joan Purdy Roney
Elizabeth Ronis
Dr. Elliott C. Rosch
Susan and Elihu Rose
The Theodore T. & Hilda Rose Foundation
Richard and Joyce Rosen
Mrs. Alexander Rosenberg
Elizabeth and Robert Rosenman
The Rosenthal Family Foundation—Jamie Rosenthal Wolf, David Wolf, Rick Rosenthal and Nancy Stephens
Ann E. Rosenthal
In memory of Helen Miller Rosenthal
Michael Rosenthal
Ruth & Samuel J. Rosenwasser Charitable Trust
Elizabeth Ross

Mary and Morris Rossabi in memory of Magnolia Sibley-Wilson
Elizabeth E. Roth
Jeffrey Roth
Francine and Alan Miles Rothenberg
Gretchen and Jamie Rubin
Frederic and Susan Rubinstein
Neil and Angelica Rudenstine
Nicholas Rudenstine
May and Samuel Rudin Family Foundation, Inc.
Susan Rudin
Charles Rush
Estate of Mariann B. Russell
Jeff and Christy Sagansky
St. John's University
A & J Saks Foundation
Mr. William H. Saltzman
Estate of Emily M. Salzberg
Estate of Michael Samek
Caroline Samuels and Michael Sturmer
Andrea M. Sankari
Regina and Dennis Santella
Carol and Lawrence Saper
James Sargis

Naomi Sarna
Mildred Saunders
Elisa M. Scatena
Sophia D. Schachter
Andy and Kiki Schaffer Charitable Gift Fund
Betty and Paul Schaffer
Simon Schama and Virginia Papaioannou
Sylvia and Robert Scher Charitable Foundation
Judy and Marty Scherzer
Joan G. Scheuer
Sarah I. Schieffelin Residuary Trust
Susan and Bruce Schlechter
Morwin Schmookler
Steven Schnapp
Adolph and Ruth Schnurmacher Foundation, Inc.
Estate of Jean Schoales
Ruth and Julian Schroeder
Harry R. Schumacher
Sara Lee and Axel Schupf
Susan E. Schuur
Ann K. Schwalbenberg
Bart Schwartz

Ellen Schwarzman
Robert A. Schwinger
Elizabeth and Stanley D. Scott
Ron Scott
Dr. and Mrs. Thomas P. Sculco
Paul H. Sears
Estate of Martin E. Segal
Dr. and Mrs. Stephen Shafer
Sirely Shaldjian
Mr. and Mrs. Peter L. Sheldon
Mary Sheridan
Murray G. and Beatrice H. Sherman Charitable Trust
Estate of Margery Shine
Donald Shire
Daria Shishkin
Alexandra Shiva and Jonathan Sherman
Gil Shiva
The Edith Glick Shoolman Children's Foundation
Jennifer M. Shotwell
Georgia Shreve
Marlene and Edward Shufro
Muriel Siebert
Thea Siegel
Efreem and Frederica Sigel
Estate of Mona Silver
Robert B. Silvers
Larry A. Silverstein
Michael Simanovsky
Jacqueline Albert-Simon
The Sidney, Milton and Leoma Simon Foundation
Mr. and Mrs. Rohit Singh
Susan L. Sloan
The Mike and Janet Slosberg Foundation
Amy Smith
B. Mark Smith
Estate of Carol H. Smith
Estate of David Schlemmer Smith
Estate of Fairchild Smith
Jean Kennedy Smith
June Smith and Steve Pensinger
Dr. Ora Smith and Dr. Howard W. Smith

Jean Smyth
 The Ted Snowdon Foundation
 Emery Snyder
 Peter J. Solomon
 Sarah and Howard Solomon
 Maurice Sonnenberg
 Judith and Otto Sonntag
 The Sontheimer Foundation
 Santina T. Spadaro
 George Spera and Jane Ginsburg
 Deborah M. Staab
 Stephen Stamas
 Stanley Stangren
 Deirdre Stanley
 The Betty J. Stebman Fund
 Vera J. Stecher
 Mrs. Daniel Steiner
 Mary B. and William C. Sterling, Jr.
 Estate of Arlette Benjamin Stern
 Lilian Stern and David Sicular
 Yuka and Robert Stern
 Sara Stevani
 Estate of Leona and Israel Stillman
 Margaret E. Stokes
 Suzette I. Stoler
 Alyson Stone
 Elizabeth and John Storch
 Story to College
 Diana and Steven Strandberg
 Lynn G. Straus
 Barbara and Peter Strauss
 Philanthropic Fund of the Jewish Communal Fund
 Christopher Strome
 Lee and Roger Strong
 Philip Strongin
 Michael and Veronica Stubbs
 Joe Sultan and Sandy Chilewich
 Edward Sulzberger Foundation, Inc.
 Jean Sulzberger
 William Sussman and Jane Steele
 Charles and Sally Svenson

Lucia D. Swanson and Theodore A. Levine
 Helene J. Swedowsky
 Kathleen M. Sweeney and Manfred Kuechler
 Estate of Dorothy Swerdlove
 Anna M. and Robert D. Taggart
 Heather Tait
 Daniel and Toby Talbot
 Estate of Marion R. Taylor
 Teagle Foundation
 David & Sylvia Teitelbaum Fund, Inc.
 Nergesh Tejani in memory of Claudia Gitelman
 Dr. Joan Templeton
 Judy E. Tenney
 Dr. Marcelle Thieboux
 Kimberly Throm
 Sarah and Orrin Tilevitz
 Kenneth Titley
 Rebecca Todd and Andrew Hruska
 Nancy E. Toff
 Ruth B. Toff
 Stirling Tomkins, Jr.
 Giorgio Topa
 Tom Topor
 Charles and Susan Tribbitt
 Calvin Trillin
 Michael Tuch Foundation, Inc.
 Dr. Hester Turner
 Ruth Turner Fund, Inc.
 John D. Tuttle
 Luis A. Ubiñas and Deborah Tolman
 United Way of New York City
 The Yaspan Unterberg Foundation, Inc.
 Marc and Mindy Utay
 Ellen M. Violet and Mary P.R. Thomas Foundation
 Melody Vogelmann
 Ernest and Dolores Vogliano
 Michael Volkovitsch
 Wayne Walker in memory of Frank Tilson Brechka
 Holly B. Wallace

Cristina Alger Wang
 Evelene Wechsler
 Brian Weddington
 Edith and Michael Weinberg
 Peter and Mary Beth Weinberger
 The Isak and Rose Weinman Foundation, Inc.
 Andrew Weinrich
 Estate of Victor Weiss
 The Weissman Family Foundation, Inc.
 Mr. and Mrs. Jeffrey F. Welles
 Lucille Werlinich
 Betsy Werthan and Bart R. Schwartz
 Linda R. Whetzel
 Patricia A. White in memory of Dr. James R. Dumpson
 Roland White
 Susan and Frank Whyman
 The Wiegands
 Ann Wiener
 Sue E. Wilder
 Wille Family Foundation
 Bernice Williams
 Dr. George L. Williams
 Dr. James McAdams Williams

Mr. and Mrs. Lowell Williams
 Mary L. and Jane W. Williams Trust
 Patricia Anne Williams
 William J. Williams, Jr.
 Peter Wilson
 Peter S. Wilson
 Robert Wilson in memory of Magnolia Sibley-Wilson
 Shelia and Thomas K. Wolfe, Jr.
 Jean and Charles Osgood Wood
 Lisa Woods
 Stuart Woods
 Peter and Carolan Workman
 Konrad Wos
 Helen M. Wright
 Camille D. Yarbrough
 Tracey and David Zabar
 Mary and George Herbert Zimmerman Foundation
 Audrey and Richard S. Zinman
 Katharyn Zinn
 Caryn and Jeffrey A. Zucker
 Claire and Albert J. Zuckerman
 Harriet Zuckerman



Children's rooms throughout NYPL offer countless open shelves of classic and recently published books for young people of all ages.

CORPORATE GIFTS



Grand Central Library serves commuters, Midtown office workers, and residents from nearby Turtle Bay.

Gifts, New Pledges, Ongoing Pledges, Matching Gifts, and Gifts-in-kind of \$1,000 or more made from July 1, 2012, through June 30, 2013, with the exception of gifts made toward benefit events.

Leadership Gifts (\$1,000,000 or more)

Citi
Hess Corporation

Major Gifts (\$100,000 to \$499,999)

Bank of America
HSBC
M·A·C AIDS Fund
McGraw Hill Financial
Rudin Management Company
Time Warner, Inc.

Sustainers (\$50,000 to \$99,999)

American Council of Learned Societies
American International Group, Inc.
The Bank of New York Mellon
Citi Foundation
Con Edison
Ford Motor Company
Goldman Sachs & Co.
Target
TD Charitable Foundation

Sponsors (\$25,000 to \$49,999)

Bloomberg
HBO
MetLife Foundation
News Corporation
Pfizer Inc
Random House, Inc.

Ruane, Cunniff & Goldfarb, Inc.
Sullivan & Cromwell
Sutherland Asbill & Brennan LLP
John Wiley & Sons, Inc.

Associates (\$10,000 to \$24,999)

Alleghany Corporation
Bring It On The Musical, LLC
Cadwalader, Wickersham & Taft
Colgate-Palmolive Company
Credit Suisse
Davis Polk & Wardwell
The Walt Disney Company
Walt Disney Theatrical Productions, Ltd.
First Eagle Investment Management Foundation
Flamenco Vivo Carlota Santana
The Guardian Life Insurance Company of America

HarperCollins Publishers
IBM International Foundation
Malkin Holdings LLC
Mayer Brown
McKinsey & Co.
National Geographic Society
W.W. Norton & Company, Inc.
NYSE Foundation, Inc.
Penguin Group
Pershing Square Capital Management L.P.
Simpson Thacher & Bartlett
Skadden, Arps, Slate, Meagher & Flom
Staten Island Foundation
S'Wonderful Limited Partnership
U.S. Bancorp Foundation
Wachtell, Lipton, Rosen & Katz
Winston & Strawn

Patrons (\$5,000 to \$9,999)

Anonymous
The Bloomingdale's Fund of the Macy's Foundation
Corning Incorporated Foundation
Eyesight Fashion & Luxury Events New York
First Manhattan Co.
Fisher Brothers
Fitzpatrick, Cella, Harper & Scinto
Google
Macmillan Publishers
Milberg Factors, Inc.
Mutual of America
Neuberger & Berman, LLC
Rolex Watch U.S.A., Inc.
Shearman & Sterling LLP
The Stop & Stor Charitable Fund
The H.W. Wilson Foundation
Wine Enthusiast Companies
Xerox Corporation

**Conservators
(\$1,000 to \$4,999)**

Anonymous
American Express
Assurant Foundation
Bachelder Law Firm
Baker & Taylor
Build n Blaze
Cynthia Cannell Literary Agency
Career Development Specialists Network
W.P. Carey, Inc.
Chanel, Inc.
Clarus Ventures
Curtis, Mallet-Prevost, Colt & Mosle
Danske Capital
Design Investors LLC
Diageo North America
The Dorsey & Whitney Foundation
ExxonMobil Foundation
First Protocol
Fox Broadcast Company
Gawker Media
Globe PR Group, Inc.
Greenhill & Co., Inc.
Hauser & Wirth
Hunton & Williams
ICE Futures US
ING Financial Services LLC
International Event and Exhibition Management
JetBlue Airways
JPMorgan Chase Foundation
Kelley Drye & Warren
The League of Off-Broadway Theatres and Producers
The League of Professional Theatre Women
Loeb Partners Corporation
Lone Pine Capital
McKool Smith
Milbank, Tweed, Hadley & McCloy

Mitsubishi Heavy Industries America, Ltd.
Jack Morton Worldwide
NBC Studios
Newmark Grubb Knight Frank
Nippon Steel & Sumitomo Metal U.S.A., Inc.
Patterson, Belknap, Webb & Tyler
Penguin Books
PepsiCo, Inc.
Pine Brook Road Partners LLC
PricewaterhouseCoopers
Project Open, Inc.
The Promotional Edge
Proskauer Rose LLP
Randa Foundation
Rockefeller Financial
The Rockefeller Group
Saba Capital Management, L.P.
Schroder Investment Management North America Inc.
Serino/Coyne Company
SESAC
Small Luxury Hotels of the World
South African Tourism
Taconic Charitable Foundation
United Technologies Corporation
Verizon Foundation
VISA USA Inc.
VTB Capital Inc.
Warner Bros.
White & Case
Workman Publishing Co., Inc.
Oliver Wyman, Inc.
Ziff Brothers Investments, LLC

VISUALIZING EMANCIPATION



Exhibition Hall

On view through
March 16, 2013



SCHOMBURG CENTER
FOR RESEARCH IN BLACK CULTURE
The New York Public Library

Lead Sponsor



The Schomburg Center's *Visualizing Emancipation* exhibition included photographs and other original documents from the 19th and 20th centuries.

BENEFIT EVENTS



Library Lions 2012, pictured with NYPL President Tony Marx: Mikhail Baryshnikov, Martin Amis, Annette Gordon-Reed, and Jennifer Egan. Awardee Nelson Mandela was not in attendance.

Library Lions Gala

Honorees

Martin Amis
Mikhail Baryshnikov
Jennifer Egan
Annette Gordon-Reed
Nelson Mandela

Co-Chairs

Ms. Anne H. Bass
Mr. and Mrs. Oscar de la Renta
H.R.H. Princess Firyal
Mr. and Mrs. John B. Hess
Mr. and Mrs. John Paulson
Mr. and Mrs. Felix Rohatyn
Mr. and Mrs. Stephen A. Schwarzman
Mr. James S. Tisch and The Honorable Merryl H. Tisch
Mr. and Mrs. Edgar Wachenheim III

Vice Chairmen

Mahnaz Ispahani Bartos and Adam Bartos
Marilyn and Jim Simons

Benefactors

Mr. and Mrs. Christopher Davis
Antoinette Delruelle and Joshua L. Steiner
Jay Fielden, Town & Country Magazine
Mr. and Mrs. John Klingenstein
Barbara and Robert Liberman
Mr. and Mrs. Donald Marron
Abby and Howard Milstein
Sue Ann Weinberg

Patrons

BNY Mellon
Sam and Sally Butler
Sila M. Calderón
Cravath, Swaine & Moore LLP
Deloitte LLP
Nancy Donohue and Diane Elam
James H. Duffy
Ian Bruce Eichner, The Continuum Company

Richard E. Farley
Ford Foundation
Mrs. Henry A. Grunwald
Mimi and Peter Haas Fund
HBO
Hermione Foundation
Mary and Michael Jaharis
McGraw-Hill
Elyse and Michael Newhouse
Carole and Morton Olshan
Mr. and Mrs. Carl H. Pforzheimer III
Katharine and William Rayner
Marshall Rose
Lily Safra
Starry Night Fund
Tishman Speyer
U.S. Bank, Leslie V. Godridge
Vicky Ward

Supporters

American Express
Cetie Nippert Ames and Anthony Ames
Anonymous

Henry Arnhold
Lisa J. and Jeff Blau
Emma Bloomberg
Mr. and Mrs. Clifford V. Brokaw IV
Nick Brown
Valentino Carlotti
Joan Hardy Clark
Virginia Coleman
Lewis B. and Louise Hirschfeld Cullman
Ray and Barbara Dalio
Cécile David-Weill
Peggy C. Davis and Gordon J. Davis, Venable LLP
de Grisogono
Jillian Demling
The Durst Organization, Inc.
Armand G. Erpf Fund, Inc.
Edward and Paula Fichtner
Barbara G. Fleischman
Larry Gagosian
Barbara Goldsmith
Nan Graham
William Gray and Diana Romney Gray
Agnes Gund

Donald and Catherine Heald
 Michael Hess
 Thomas Jayne
 John J. and Charlotte Kenney
 Younghee Kim-Wait
 Beth and Christopher Kojima
 Susan and David Lazarus
 Arthur L. Loeb
 Raymond J. McGuire
 Andrea G. McNicol
 Sandy and Ed Meyer
 Susan Moldow
 Susan and Robert P. Morgenthau
 Andrea Olshan
 Reed Smith LLP
 Carolyn Reidy
 Dr. Stephen Reidy
 Avis and Bruce Richards
 Zibby and Andrew Right
 David Rockefeller
 Sandra Priest Rose
 Marjorie G. Rosen and Jeffrey A. Rosen
 Mrs. A. M. Rosenthal
 Fiona and Eric Rudin
 Jeanette Sarkisian and Paul A. Wagner
 Morwin Schmookler
 Teddy and Ellen Schwarzman
 Gil Shiva
 The Susan Stein Shiva Foundation
 Robert B. Silvers
 Suzanne St. Pierre
 Dr. and Mrs. Leo J. Tick
 Jamie Alexander Tisch
 Jessica Tisch
 Amanda Urban
 Dana Wallach Jones
 Tali and Boaz Weinstein
 Lally Graham Weymouth and Mr. Joseph M. Cohen
 Mark and Carol Willis

2012 Young Lions Benefit Party

Co-Chairs

Emma Bloomberg
 Nick Brown
 Sloane Crosley
 Jillian Demling
 Kirsten Dunst
 Josh Groban
 Garrett Hedlund
 Michael Hess
 Cody Horn
 Andrea Olshan
 Emma Stone
 Jessica Tisch
 Allison Williams

Benefit Committee

Russell Abrams
 Elizabeth Berman
 Eric Blair-Joannou
 Giovanna Campagna
 Annabelle Cauffman Soudavar
 Kerwelyn Craig
 Nedenia Craig
 Pierce Derkac
 Richard Dover
 Katie Goldsmith
 Ana Tereza Guimaraes
 Sarah Jacobs
 Abigail Johnson
 Selena Kalvaria
 Steven Karan
 Melanie Kefalidis
 Meggie Kempner
 Andrew Klaber
 Beth and Christopher Kojima
 Lindsay Kraus
 Susan and David Lazarus
 Lauren Lipsky
 Elliott Merck
 Jaimie Monahan
 John Munson
 Nicole Naimo
 Zibby and Andrew Right
 Morwin Schmookler

Teddy and Ellen Schwarzman
 Doree Shafrir
 Lacary Sharpe
 Signature Bank
 Rohit Singh
 Natalie Stein
 Alyson Stone
 Erica Temel
 Nomi Victor
 Lauren Whatley

2013 Family Benefit

Co-Chairs

Katerina Alevizaki-Dracopoulos
 Beth Kojima
 Andrea Olshan

Daisy Prince
 Tina Samii
 Amanda Waldron

Fairy Godparents

Lisa and Jeff Blau
 Merilee and Roy Bostock
 Steven and Alexandra Cohen Foundation
 Nanar and Tony Yoseloff

Benefit Committee

Kristin and Charles Allen
 Abigail Baratta
 Elizabeth and Chris Bonner
 Kate Bostock-Shefferman
 Stacey Sortirhos Goneos
 Dana Wallach Jones and Michael T.M. Jones



The annual Family Benefit transforms Astor Hall into a children's wonderland and raises critical funds for children's services and programs in branch libraries.

Abby Levy
 Margaret Munzer Loeb and
 Daniel Loeb
 Pamela Rabinovici
 Rebecca Raphael
 Zibby and Andrew Right
 Gretchen and James Rubin
 Fiona and Eric Rudin
 Teddy and Ellen
 Schwarzman
 Molly and Joe Sheehan
 Lauren and Alexander
 Silverman
 Sukey Chipps Tamarkin
 Sharon Wee and Tracy Fu

Library Lunch

Co-Chairs

Lea Brokaw
 Danielle Ganek
 Shala Monroe
 David Remnick
 Elizabeth Rohatyn
 Olga Votis

Sponsor

Asprey

Literary Partner

The New Yorker

Steering Committee

Linda P. Barnett
 Mahnaz Ispahani Bartos
 Lisa Blau
 Donya Archer Bommer
 Merilee H. Bostock
 Tory Burch
 Katie Carpenter
 Joan Hardy Clark
 Jill A. Davis
 Sharon Davis
 Annette de la Renta
 Caroline Dean
 Diana Roesch DiMenna
 Alice Elgart
 Fleur Fairman
 Deborah Brightman
 Farone
 Leslie V. Godridge
 Barbara Goldsmith
 Diana Gray
 Mrs. Henry A. Grunwald
 Amie James
 Samhita A.P. Jayanti
 Mrs. John Klingenstein

Beth Kojima
 Coco Kopelman
 Kimberly Kravis
 Kristen Maltese Krusen
 Carol Mack
 Catie Marron
 Abby Milstein
 Susan Moldow
 Susan Morgenthau
 Lynn Nesbit
 Elyse Newhouse
 Liz Peek
 Perri Peltz
 Amalia Pisante
 Mrs. Katharine J. Rayner
 Darcy Rigas
 Jeanne Greenberg
 Rohatyn
 Fiona Rudin
 Christine and Stephen A.
 Schwarzman
 Kitty Sherrill
 Peggy Siegal
 Mary Snow
 Mrs. Saul P. Steinberg
 Amanda Taylor
 Yvonne Force Villareal
 Sue W. Wachenheim

Amanda Waldron
 Mrs. John L. Weinberg
 Mary H. White, MD
 Bettina Zilkha

Underwriter Vice-Chairs

Jill A. Davis
 Annette de la Renta
 HBO
 Mrs. John Klingenstein
 Elyse Newhouse
 U.S. Bank, Leslie V.
 Godridge

Benefactor Vice-Chairs

Diana Roesch DiMenna
 Amie James
 Catie Marron
 Abby Milstein
 Katharine and William
 Rayner
 Marilyn and Jim Simons
 Sue W. Wachenheim

Patron Vice-Chairs

Mahnaz Ispahani Bartos
 Christopher and Sharon
 Davis
 Fleur Fairman
 Samhita A.P. Jayanti
 Amalia Pisante
 Christine and Stephen A.
 Schwarzman

Sponsor Vice-Chairs

Anonymous
 Linda P. Barnett
 Alice Elgart
 Deborah Brightman
 Farone
 The David Geffen
 Foundation
 Beth Kojima
 Kristen Maltese Krusen
 Susan Morgenthau
 Liz Peek
 Penguin Books, A Division of
 Penguin Group USA



The Library Lunch featured a discussion of classic literature moderated by Co-Chair and Trustee David Remnick (not pictured). Pictured: NYPL President Tony Marx (center) and Co-Chairs (left to right) Olga Votis, Lea Brokaw, Danielle Ganek, and Trustee Elizabeth Rohatyn, with Darcy Rigas representing the event sponsor, Asprey (second from right), and Co-Chair Shala Monroe (far right).



Howard and Abby Milstein were honored at the Spring Dinner for Education, which benefits NYPL's extensive literacy and other educational programs.

Random House, Inc.
Fiona Rudin
Amanda Waldron
Mary H. White, MD

Underwriter Committee

Cetie Nippert Ames
Lisa Blau
Cecile David-Weill
Caroline Dean
Steven Lipin
Susan Moldow
Mrs. James C. Slaughter
Mrs. Saul P. Steinberg
Mrs. John L. Weinberg

Benefactor Committee

John and Jasanna Britton
Noreen Buckfire
Joan Hardy Clark
Marilyn F. Friedman
Joan Granlund
Diana and William Gray
Barbara Ostrove Grodd
Mrs. Henry A. Grunwald
Carol Mack
Carol Netzer
Lynne Pasculano
Jeanne Greenberg
Rohatyn
Mrs. Daniel Rose
Janet Wallach

Patron Committee

Pamela Awad
Estelle Beckson
Donya Archer Bommer
Merilee H. Bostock
Susan Braddock
Tory Burch
Sally Butler
de Grisogono
Ruth M. Feder
John L. Furth
Joan Marlow Golan
Barbara Goldsmith
Eleanora Kennedy–The Shana
Alexander Foundation
Coco Kopelman
Nanette L. Laitman
The Ronald and Jo Carole
Lauder Foundation
The Arthur Loeb
Foundation
Mary Kathryn Navab
Daniel M. Neidich and Brooke
Garber Foundation
Lynn Nesbit
Nancy Offit
Nataly Ritter
Morwin Schmookler
Kitty Sherrill
Robert B. Silvers
Mary Snow
Dr. and Mrs. Leo J. Tick

Sponsor Committee

Anonymous (2)
Betsy Barbanell
Claire B. Benenson
Katie Carpenter
Judith R. Ehrlich
Mrs. Stanley J. Fennessy
Susan Fleischer
Jacqueline Fowler
Johanna and Leslie
Garfield
Lynn Halbfinger
Catherine Heald
Nancy Jackson Hodin
Caroline Hyman
Aurelia Ion
Kimberly Kravis
Virginia S. Lyon
Perri Peltz
Sangeetha Ramaswamy
Frances Schultz
Peggy Siegal
Daisy M. Soros
Patricia Brown Specter
Ruth S. Stanton
Sheila Stephenson
Leslie Stevens
Helen Tucker
Diane van Amerongen
Yvonne Force Villareal
Bettina Zilkha

Spring Dinner for Education

Co-Chairs

Katerina and Andreas
Dracopoulos
Lisa and Richard Plepler
Merryl and James Tisch

Vice Chairs

Barbara and Evan Chesler
Loren Eng and Dinakar
Singh
Elyse and Michael
Newhouse

Corporate Chair

Pat Fili-Krushel and Kenneth
Krushel

In Partnership With

NBC News

Underwriter Tables

Abby and Howard
Milstein
NBCUniversal News
Group
Marilyn and Jim Simons

Patron Tables

Mahnaz Ispahani Bartos and
Adam Bartos
McGraw Hill Financial
Sue and Edgar
Wachenheim III

Supporter Tables

Richard Cohen and
Vicky Ward
Annette and Oscar de la
Renta
Mary and Michael Jaharis
Sony Corporation of
America
Tali and Boaz Weinstein

Corporate Partner Tables

American Express
Con Edison
The Durst Organization,
Inc.
HSBC
Morgan Stanley
Sullivan & Cromwell LLP

Young Lions Tables

Beth and Christopher
Kojima

Supporters

Anonymous
Henry H. Arnhold
Georgette Bennett and
Leonard Polonsky

The Judy and Howard Berkowitz Foundation
 Mr. and Mrs. John P. Birkelund
 Blue Cross Blue Shield
 Sam and Sally Butler
 Joan Hardy Clark
 Jan and Lloyd Constantine
 Mr. and Mrs. Richard Elden
 Barbara G. Fleischman
 Judy and Steven Gluckstern
 Joan Granlund
 Eugene and Emily Grant Family Foundation
 William and Diana Gray
 Lynn and Martin Halbfinger
 Roger and Susan Hertog
 Dr. and Mrs. Henry A. Kissinger
 The Arthur Loeb Foundation
 Ryan and Lisa McCorvie
 Terry Meehan
 Joyce F. Menschel
 Mr. Leigh M. Miller
 Susan and Robert Morgenthau
 Alexandra Munroe and Robert Rosenkranz
 Morris and Nancy Offit
 Carl and Betty Pforzheimer
 Andy and Andrea Potash
 Katharine and William Rayner
 Liz Robbins, Scholastic
 David Rockefeller
 Sandra Priest Rose
 Susan and Elihu Rose
 Fiona and Eric Rudin
 Mr. and Mrs. Rohit Singh
 Susan Sloan
 Gayfryd Steinberg
 Joan and Michael Steinberg
 Sue Ann Weinberg

Lisa Woods
 Steven R. Yanis
 Richard and Audrey Zinman

Astor Committee
 Judith Berkowitz
 The Honorable Vincent Gentile
 Thelma Golden
 The Honorable Robert Jackson
 Kevin and Karen Kennedy
 Courtney O'Malley
 Peter Rider
 Joan and Michael Steinberg
 The Honorable James Van Bramer
 Sue Ann Weinberg

Financial Services Leadership Forum

Speakers
 Roger Altman
 Jeremy Grantham
 Steve Mandel
 David E. Sanger
 Chad Sweet

Sponsor
 McGraw Hill Financial

Financial Services Leadership Forum Advisory Committee

Co-Chairs
 Claire B. Benenson
 Judith R. Ehrlich
 Leslie D. Toepfer

Honorary Chair
 Lewis B. Cullman

Henry Arnhold
 Leslie Bains
 Andrew M. Blum
 Samuel C. Butler

Hon. William H. Donaldson
 Louis V. Eccleston
 Harold Ehrlich
 William Freda
 Roy L. Furman
 Edward L. Gardner
 Leslie V. Godridge
 Alan C. Greenberg
 Maurice R. Greenberg
 Edward S. Hyman
 Henry P. Johnson
 Ann Kaplan
 Todd Lang
 Alexandra Lebenthal
 Sid Lerner
 Catherine Marron
 William J. McDonough
 Harold McGraw III
 Doris P. Meister
 Douglas L. Peterson
 Peter G. Peterson
 Laura Resnikoff
 Paul Schreiber
 Daniel H. Stern
 Edgar Wachenheim III
 Lulu C. Wang
 John C. Whitehead

Publishers and Literary Committee

Elizabeth Beier
 Jonathan Burnham
 Maria B. Campbell
 Kathryn Court
 Barbara Epler
 Jonathan Galassi
 Suzanne Gluck
 Nan Graham
 Daniel Halpern
 Alexandra Machinist
 Esther Margolis
 Kate Medina
 John G. H. Oakes
 Sally Richardson
 Joan B. Sanger
 Robert B. Silvers
 Eric Simonoff
 Paul Slovak
 Nan A. Talese
 Sam Tanenhaus
 Calvin Trillin
 Binky Urban
 Robert Weil



Dedicated NYPL supporters Christopher and Beth Kojima are pictured at the Spring Dinner for Education.

THE BIGELOW SOCIETY



Children in preschool and the early grades learn a variety of skills using different materials while working on hands-on crafts projects at NYPL.

(Members have included the Library in their estate plans.)

Irrevocable Planned Gifts

Robert G. Adams*
 Helen M. Allen
 Janet and Edward Allworth
 Joyce Anderson
 William W. Appleton
 Carol Ascher and Robert Pittenger
 Hope and Arnold Asrelsky
 Mr. and Mrs. Herbert August
 Blanche D. Balacek
 Lawrence Bartelsen
 Thelma Beale
 Irma Bell
 Mr. and Mrs. Maurice J. Bendahan
 Claire B. Benenson
 Joan Benson
 Marie Benson
 Vilma F. Bergane
 Susanna Berger

Lee Billington
 Samantha Biro
 Anne Blatt
 Edmund Bleich
 Betty and Albert Bodian
 James Bogue
 Herbert A. Boley
 George B. Bookman
 Dorothy A. Borg
 Janet Bower-Bachelet
 Edmund A. Bowles
 Ann M. Bragg
 Mary A. Brendle
 Richard A. Burgheim
 Mr. and Mrs. Samuel C. Butler
 Nina Bykow
 Mrs. James Cahn*
 Joel T. Camche
 Castle B. Campbell
 Barbara H. Cane
 Eleanor Carlucci*
 Mildred Carroll
 Mary Ann Caws
 Bertha Chase

David Chou
 Tse-Yun Chu
 Kenneth and Nona Clarke
 Margot P. Close
 Karen Cocchi
 Ruth Cohen
 Theodore and Alice Ginott Cohn
 Mary M. Conway
 Charlotte L. Cooke*
 Mrs. Sidney Cooley neé Rose Smith Price
 Caroline B. Cooney
 Robert M. Costa
 James D. Crawford
 Malcolm Crawford
 William Crookston and Marilyn Sauline
 Sybil M. Daneman
 Ann M. Darmstaetter
 Sheila and Harold Davis
 Margaret C. Davison
 Muriel A. Diamond
 Ruth Dickler
 Erica Doctorow
 John and Rose Donnelly
 Dorothy B. Donovan
 Eugenia G. Dooley
 Charles R. Drew
 Frone and Maurice Eisenstadt
 Carol Emshoff
 Richard B. Everett
 Gertrud Fankhauser
 Paul Fasana
 Henry Fehrenbacher
 Marjorie Anne Flory
 Mildred Forrell
 Jeannette Foss
 Edith F. and Eugene P. Friedman
 Shirley Gallagher
 Robert J. Geiger
 Madeleine Gekiere
 Barbara Gettinger
 James C. Giblin
 Nancy Glamore
 Joan Marlow Golan
 Elmera Goldberg
 Margaret Goldman
 Morris M. Golub
 Emma Leigh Goodwin
 Miriam Gordon
 Margery Gori-Montanelli
 Georgia Adams Grann
 Patricia Grant
 Ann F. Green
 Rosalind Guaraldo
 Julina Gylfe
 Helen M. Hacker
 Robert G. Hartmann
 James Wood Henderson
 Sourya Henderson
 David Heskin
 Maureen Horgan
 Susan Howard
 Uri and Johanna Hurwitz
 Ida S. Hymowitz
 Irma B. Jaffe
 Gertrude Jelinek
 Lucy Jensen
 Rita Gail Johnson
 Elsie Ann Juchheim
 Zigmund C. Kaminski
 Dorothy Anne Keller*
 Madeline Kerns
 Edward Kirkland
 Carolyn Kirmss
 Blanche Klein
 Doris M. Kling
 Leopold G. Koss*
 Janet Kozeza
 Frank Robert Kraft*
 Mavis E.P. Lakeman in memory of Joseph Schrank
 Don Laviano
 Grace Leight
 Angela Lennox-Kay
 Katherine Lessersohn
 Lucy D. Lieberfeld
 Milton J. Lowenstein
 Bradley J. Lutz
 Karyl Charna Lynn
 Virginia S. Lyon
 Anna Macias
 Mr. and Mrs. Robert B.W. MacNeil
 Herbert J. Maletz
 Alice Maram*
 Kishore B. Marathe

Lorraine Mashioff
 George William Mayer, Jr.
 Charlotte Mayerson
 Jean M. McCarroll
 Charles McCown
 Frieda Melnick
 Charles W. Merrels
 James Miller
 Leigh M. Miller
 Saul Mines
 Frank Montaturo
 Cynthia Morgenweck*
 Carole Morrill
 Erwin and Audrey Muscat
 Mary J. Mycek
 Juliana C. Nash
 Marjorie Naughton
 John Bulica Nicholson
 Eleanor November
 Paula Offricht
 Marian M. Oliva
 Lucy O'Neil
 Sally and Michael Orr
 Saul Ostrow
 Mrs. Robert E. Pabst
 Gilbert Parker in honor of
 Betty Corwin
 Stephen R. Parker
 Regina Pearlmutter
 James A. Pendergrass, Sr.
 Shelagh M. Perrotta
 Roberto J. Pick
 Muriel Pivalo
 Yvette G. Plotch
 Marietta Poerio
 David Rabois
 Mildred Rafaj
 Eileen Nagel Rafield
 Jane Randall
 Judy T. Reemtsma
 Mrs. William C. Ridgway, Jr.
 Jeanne Robertson
 Mordecai Rochlin
 Marion Roiphe
 Sheila M. Rosen
 Peter Rosendahl
 Sonya Rosenfeld
 Daniel Rossiter

Norma Rossler*
 Jane C. Rubens
 Irma Rusk
 James Sargis
 Renée and Carl Schlesinger
 Rona and Martin L. Schneider
 Barbara Schoenberg
 H. Joseph Scott
 Lenore Scott
 Eleanor and Irwin Segan
 Hara Seltzer
 June Sheer
 Mary Sheridan
 Jerry A. Shroder
 Thea Siegel
 Fairchild B. Smith*
 Sharon Dunlap Smith
 Winthrop Smith
 Rosalyn Smolen
 Josephine Sokolski
 Carmelo V. Spadafore
 Mr. and Mrs. Hoyt Spelman III
 Beatrice Spillane
 Dr. Florence J. Staats
 Beverly M. Sullivan
 Joseph A. D. Surace
 Kathleen Susmann
 Dorothy L. Swerdlove*
 Leo Tick
 David Tischler
 Gloria Title
 Florence Toledano
 Tom Topor
 Phyllis Tribble
 Edith F. Unger
 Carol Waaser
 Nancy D. Warfield
 Anthony M. Warren
 Syed M. Wasiquallah
 Harold Webb in memory of
 Sidney Brettschneider
 Jane Weidlund
 Fred M. Weil
 Dora L. Wiebenson
 George Williams
 Dolores M. Wills
 Jack H. Wolf

Bequest Intentions

Anonymous from Harlem
 Kathleen T. Aaron
 Robert Abbott
 V. Mary Abraham
 Estelle Abrahamson
 Robert G. Adams*
 J. David Adler
 Carole Adrian
 Mia Albright
 Peter Allemano
 Harold Peter Allen
 Stephen Ames
 Ruth Anderson
 Charles R. Andrews
 Marilyn Apelson*
 Frank and Mary Ann Arisman
 Madison Arnold
 Mrs. Ilhan Arsel
 The Arts and Letters
 Foundation
 James E. Audino*
 Herbert August
 Rhett Austell
 Nancy S. Axelrad
 John M. Bacon

Conrad Bahlke and Roxane
 Orgill
 Aline K. Ball*
 Mary Beth Balogh
 J. Leiter Bamberger, Jr.
 Caryl Baron
 Barbara Barran
 Thomas Barran
 Laurinda Barrett
 John Barrow
 Nancy Barsotti
 Anthony Basta
 Sharon L. Baver*
 Irene Bayer
 Patricia Bean
 Marguerite S. Bedell
 Flora W. Benas
 Claire B. Benenson
 Evelyn Benjamin
 Randy V. Beranek
 Julius Berenson
 Susanna Berger
 Joy A. Bergmann
 Seth Berkley
 Gaye-Darlene Bidart de
 Satulsky



The Fort Washington Library Children's Room features fancifully decorated light fixtures and an animal-adorned rug.

Susan Hulsman Bingham
 Samantha Biro
 Chester Biscardi
 Deanna Bittker
 Willie Mae Black
 Anne Blatt
 Agnes Bogart
 Gloria B. Bogin
 Rose-Marie Boller
 S. H.A. Booker
 Doris Bookman
 Thomas Booth and Denise Szabo
 Marguerite Borchardt
 Dorothy A. Borg
 Edna Bowen
 Edmund A. Bowles
 Peter Boysen
 George A. Bradley

Joan Bragin
 Edna L. Breecker
 Mary A. Brendle
 Marilou Brill and David Heskin
 E. LeMerle Brinkley
 Alan J. Broder
 Francine Brown
 Helen Gurley Brown*
 Linda K. Brown
 Cynthia B. Brush
 Michele Buchanan
 Gerald Busby
 Rochelle Busch
 Samuel C. Butler
 David Cain
 Joel T. Camche
 J. Campbell
 Jean Burton Walker Campbell
 Theresa J. Canada

Gabriella Befani Canfield
 Barry John Capella
 Eleanor Carlucci*
 Barbara Carter
 Helen R. Casciani
 Matilda Cascio
 Kay Cassell
 Christopher Casso
 Robert Chamberlaine
 Mr. and Mrs. Kenneth A. Chambers
 Chen Ing Chang
 Bertha Chase
 Irene H. Chayes
 Barry Chester and Elissa Cogan
 Judith Childs
 Joan Hardy Clark
 Margot P. Close
 Hazel Cogar
 Annemarie Colbin
 Joseph Bailey Cole
 Marie H. Cole
 Mrs. Sager Tilden Colman
 Ronald Columbus
 Spring Condoyan
 Charlotte L. Cooke*
 Margaret Cooley
 Barbara Roisman Cooper
 Katherine L. Coppock
 Sol Neil Corbin
 Maurice Cory
 E.W. Count
 Mrs. Richard W. Couper
 Bonnie R. Crown
 Lewis B. Cullman
 Glenn S. Daily
 Rosamond W. Dana
 Alma Daniel
 Judy Daniels
 Mrs. Wilbur Daniels
 Joy Darlington
 Robert W. Davenport
 James and Diana Davies
 Deborah T. Davis
 Robert and Alice Davis
 Ruth Davis
 Margaret C. Davison
 Patricia M. De Angelis*

Sally Deitz
 Gonzalo de Las Heras
 Steve and Connie Delehanty
 Marie de Lucia and Lee Solot
 Mr. and Mrs. Peter Demy
 John Denkowski
 Jamie deRoy
 Harold Z. Dessler
 Ruth Deutscher
 Ruth Dickler
 Rosanne Dobbins
 Robert L. Dobbs, Sr.
 Mary Ellen Donovan
 Eugenia G. Dooley
 Annette I. Dorsky
 Domitilia M. dos Santos
 Marjorie Dovman
 Irene Dowd
 Joyce Doyle
 Marjorie H. Drabkin*
 Diane Dreher
 William A. Dreher
 Sylvia Dresner
 Mrs. Charles V. Drew*
 Carol F. Drisko
 Martin Duberman and Eli Zal
 James Duffy
 Gretchen Dykstra
 Conrad J. Eberstein
 Barbara Lee Ebs
 Merle Edelman
 Lydia Edwards
 Julie C. Eichenberger
 Frone and Maurice Eisenstadt
 Carolyn A. Eldred
 Ethel Elkin
 Audrey Ellinger
 Scott Ellis
 Carol Emshoff
 Judith Entes
 Ann Fagan and Gabor Vermes
 Gertrud Fankhauser
 Judy Farkas
 Paul Fasana
 Vivien Fauerbach
 Helga Feder
 Jesse Feiler
 Hortense F. Feldblum*



NYPL's 88 neighborhood libraries provide welcoming, well-lit spaces for community members to browse new books and DVDs, attend programs, and find comfortable seating for reading or studying and a respite from the city.

Catherine S. Felleman
 Mrs. Stanley J. Fenvesy
 Dennis Ferguson
 Kathleen Ferguson
 Edward and Paula Fichtner
 Frank R. Fioramonti
 Mary Fisher-Northrop
 Mary Flannery
 Erwin Flaxman and Linda Laughlin
 Patricia A. Fletcher
 Ellen L. Fogle
 Tom Fontana
 Seanan Forbes
 Mr. and Mrs. Norman F. Foy
 Edmond D. Franco
 Stephen Francoeur
 Milton R. Franklin
 Gail Fread
 Darlene Freeman
 Eunice Healey Freezer*
 Ronald Freyberger
 Harvey Fried
 Sylvia Friedman
 Ruth Fromm
 Dorothy B. Gail
 Lois Gartlir
 Lauren M. Gee
 Robert J. Geiger
 Michael Gelber
 Gladys Gendel
 Egon R. Gerard
 Brian Gerber
 Mark Getlein
 Connie Giampietro
 Mary Gibbons
 Ellen B. Gibbs
 James C. Gibling
 Judith Ginsberg
 Elisabeth Gitter
 Gloria T. Glaser
 Nora L. Glass
 Judith M. Glassman
 Patricia M. Glenns
 Maxine Glorsky
 Joan Marlow Golan
 Joyce Golden
 Albert S. Goldman
 Margaret Goldman

Morris M. Golub
 Evelyn Goodman
 Regina F. Gordon
 Jean Patrice Gorham and Robert H. Brenner
 Leah Gorham
 Richard A. Gorr
 Gabriele M. Gossner
 Stanley Gotlin
 Barbara Gottlieb
 Lorraine Gracey
 Sally Gran
 Georgia Adams Grann
 Marilyn Grayburn
 Estelle Greco
 Jules Greenberg
 Rose Greenberg
 Ellin Greene
 Joan Greenfield
 Joanna Greenspon
 Patricia Jones Gregory
 Ruth Belov Gross
 William L. Gross
 Rosalind Guaraldo
 Jean S. Guilder
 Catherine Guillory*
 Lawrence Gutman
 Robert W. Gutman
 Christina Gutt
 Lewis I. Haber
 Ilse Haeefe
 Adele J. Haft
 Carolyn Hale
 Janice Handler
 Gerard Hanley
 Patricia Hansen
 Ralph E. Hansmann
 Josie Harknes
 Harland Family Trust
 Michele Harley
 Conrad K. Harper
 Jeffrey Harper
 Gail Irwin Hartman
 Robert G. Hartmann
 Grace W. Harvey
 Gregory F. Hauser
 Judith Hayman
 Olga and Martin Hayott
 Andrée Hayum



During the summer, the Schomburg Center hosts First Fridays in its outdoor courtyard. The monthly gathering allows visitors to tour the exhibitions during extended hours and listen to music with friends and neighbors.

Janet Heiligman
 Elizabeth Heine
 Mrs. Andrew Heiskell
 Antoinette Heit
 Carol Hekimian
 Ellen M. Helinka
 Alice Helpert
 James Wood Henderson
 Joan E. Henricksen
 Rita K. and Richard W. Herber
 Phyllis and Seymour Herschberg
 Robert W. Hewitt
 Susan Hill
 Lois N. Hilton
 Claus W. Hirsch
 Rita and John Hirsch
 Takaji Hishiyama
 Gail Hitt
 Gloria L. Hobbs
 Roberta Hodes
 Linora Hoffman
 Anne J. Hofmann
 Mrs. James Hoge
 Erica Holstein
 Florence A. Horenstein
 Greta Horn
 Charles T. Howard

Rikki Hudes-Michels
 Alice C. Hudson
 Anne M. Hughes
 Sophie A. Hughes
 William Hughes
 Cheryl Hurley
 Jean Hurley
 Isabelle and Jerome E. Hyman
 Saeko Ichinohe
 IK Trust
 Anja Impola
 Nina M. Itkin
 Carolyn Ann Jackson
 Richard H. Jackson
 William V. Jackson
 Irma B. Jaffe
 David Jarrett
 Gertrude Jelinek
 Gordana and Joseph Jelisavcic
 Lucy Jensen
 Phyllis La Farge Johnson
 Theresa M. Johnson
 Elaine and Nathan Joseph
 Jennifer Josephy
 Peter H. Judd
 Bennett Judson
 Janet Jurist
 David Kahn

Brenda Kamen	Rachel Lawrence	Gregg Mayer	Dr. Carol Neuls-Bates
Carolyn Kane	Ruth Ann Leach	Charlotte Mayerson	Barbara Newman
David M. Kaplan	Paul LeClerc	M.J. McAuliffe	Mr. and Mrs. Bruce Lindsley Newman
Evelyn Rypins Kaplan	Russell V. Lee	Bridget S. McCarthy	Irene Newton
H. David Kaplan	Susan Lee	Charles McCown	Diane Allen Nixon
Stephen J. Karakashian	Catherine A. Lennon	Nancy McGlashan	Dr. Tony Noice
William W. Karatz	Joseph Peter Leong	Ann McGowan	Malcolm C. Nolen
Gloria Karpas	Thomas Leslie	Ann F. McHugh	Demetra K. Notaras
Miriam Kartch-Hughes	Leonard Levenson	Susan McKeon	Eleanor November
Edward Kasinec	Lawrence Levine	Frederick McKinnon	W. Sean O'Donoghue
Elizabeth Katsivelos	Mark Levine	Norma McMillan	Anita O'Gara
Eleanor Katz	Mrs. Edward Levitt	Josephine McSweeney	Doris Ohlsen
Beatrice Kaufman	Mr. and Mrs. Abraham Levy	Bonnie L. Mechanick	Gertrude Oothout
June E. Kay	Elizabeth Rivers Lewine	Robert L. Meineker	Helene and Martin Oppenheimer
Dr. Sivia Kaye	Edith Lewis	Phyllis Melhado	Nancy Paine
Sandy Kazinski	Iris Liberman	Robert Menschel	Nicole Paisner
Patricia Kelly	Kelsey Libner	Marina Mercado*	Naomi Andrews Palmer
Nicholas Kepros	George Liker*	Guy Merckx	Barbara Lee Parker
L. Wilson Kidd, Jr.	Joan K. Lince	Colman G. Merithew	Richard Pasqual
Alan Kimmel	Susan E. Linder	Thomas Mermall	Rosalie Pataro
Patricia King	Ruth Clare Lipper	Jaymie Meyer	Carol Ann Payne
Janet Kispert-White and Peter White	Charlotte Lipson	Mr. and Mrs. Louis Meyer	Irene B. Payne
Ruth M. Kivette	Irma P. Lobel	Kay Michaels	Marion Pearce
Milada Klatil	Annea F. Lockwood	Ann Davidson Michell	Judith B. Pegg
Blanche Klein	Catherine Lomuscio	Bernice Migdal	Edith Penty
Jane L. Klein	Frank Lomuscio Jr.	Marcia D. Miller	Anne Perkins
Melissa Klein	Susan London	Naomi Miller	Beth Peterson
Helene Kline	Russell Longano	Joan Mintz and Robinson Markel	Gregory J. Peterson
Doris M. Kling	Mona Lourie	Eileen F. Monaghan	Barbara Petroske
Patricia D. Klingenstein	Karyl Charna Lynn	Roy and Alma Moore	Lemoine Pierce
Raymond Knowles	Marion Lynton	William R. Moran	Geri and Lester Pollack
Stephen Koch	Virginia S. Lyon	Marion E. Morey	Paula Praeger
Carolyn Kopp	Chris MacLeod	Amanda Morford-Lovett	Eleanor Pripadcheff
Carol S. Kostik	Jan Maier	Vacera Morgan	Lourdes Proto
Arlyne Krum	Bella Malinka	Evelyn Morgenbesser	Robert W. Radtke
Thomas Kudas	Hermes Mallea	Jack Morgenstein	Diane J. Radycki
Susan Kulick	Carey C. Maloney	Susan Morgenthau	Fyat Raines
James I. Lader	Faye Mandel	Dolores O. Morris	Howard Rapp
James LaForce and Stephen Henderson	Beatrice Mangin	Jill M. Morris	Mary Ratcliffe
Jan Lakin	Thomas A. Manning	Norma Morris	Marilyn B. Reagan
Eleanor Landi	Tessie C. Mantzoros	Rhoma Mostel	John Reeser
Charlene Landis	Lois G. Marcus	Priscilla Muller	John E. Reilly, Jr.
Lynn D. Lane	Ronald A. Margulis	Carol F. Mungin	Mr. and Mrs. Michael Reiss
Scott and Tracy Lange	Betty Marks	Winthrop R. Munyan	Trudy Reitz
Joan L. Larson	Raymond M. Marsh	Irene Stober Murphy	Geraldine Remington
Don Laviano	Lorraine Mashioff	Pamela Miller Ness and Paul Ness	Michelle A. Ridgely
Hulda Lawrence	Harry M. Matthews, Jr.	Carol R. Netzer	Mary S. Riebold
	Janet R. and Hillel Maximon		
	Lynne Maxwell		

Rosina L. Ripton	Susan Schindler	Sandy Stern	Diana Waite
Muriel Robbins	Marie Schisano	Dail Stolow	Dorit Wallach
Gilda Roberts	Robert Schneck and Cora Fung	Mrs. Peter H. Stone	Mrs. Ira D. Wallach
Wayne A. Robinson	Anne Kaufman Schneider	Nina Strattner	Joan M. Walsh
Ruthjane Robitaille	Mollie Schneider	Steven Strauss	Aileen Ward
Barbara Rodgers	Katherine R. Schubart	Julia Strohm	Nancy D. Warfield
Rama Rodvien	H. Joseph Scott	Philip Strongin	Janice D. Warnke
Mr. and Mrs. Edward H. Roesner	Lenore Scott	Randel S. Stubbs	Anne Clark Washburn
Marian Rogers	Michael Clinton Scott	Estelle S. Sussman	Claire Wasserman
Myron Sulzberger Rolfe	Martin E. Segal*	Jeanne M. Sutherland	Jane Weidlund
Jose Romeu, MD	Susan Seidel	Eileen Sutton	Michael Weinstein
Ethel Grodzins Romm	Barbara Seiger	Dorothy L. Swerdlove*	Irene Weissman
Evelyn Ronell	Delia A. Selby	Sheila C. Swigert	Marilyn E. and Kenneth I. Weissman
Adam R. Rose	Anita R. Shapiro*	Jean M. Szczypien	Gayle W. Welling
Margot P. Rose	Nancy Shapiro	Martha Tack	Barbara Welter
Marshall Rose	Joan Shaw	Anthony Taylor	Jean and Kenneth Wentworth
Ellen Rosen	Marie Shear	Patricia R. Taylor	Wallace White, Jr.
Sheila M. Rosen	Carol Shedlin	Joan Templeton	Laura B. Whitman
Joann Ross	Abraham Sheingold	Lorina Tester	Bonna and Richard F. Whitten-Stoval
Morgan Ross	Dixie Sheridan	Katrina Thomas	Dora L. Wiebenson
Phyllis Ross	John R. Sherman	Simone M. Thornber	Nancy Wight
Mr. and Mrs. Howard Roth	John T. Shields	Leo Tick	William Wilcox
Belle Rothberg	David Shire	Maria Ting	Refna Wilkin
Miriam B. Rothberg	Charlotte Shoemaker	Gloria Title	Dolores M. Wills
Alan Miles Rothenberg	Eileen M. Shore	Selma S. Toback	Barbara Winter
Francine M. Rothenberg	Winston Shyatt	Tobi Tobias	Walt Witcover
Deborah E. Rothschild	Joysanne Sidimus	Alyce W. Toonk	Barbara A. Withers
Eileen and Ted Rowland	Thea Siegel	Tom Topor	Roxane Witke
S.J. Rozan	Kenneth Silverman	Albertha Toppins	Marilyn Wolf
Dana Rubin	Robert B. Silvers	Sylvia Tosoni	Michael Wolf
Harriette Rubinstein	Samuel M. Silvers	Marianne Troy	Susan B. Wolf
Julius Rudel	John and Marian Simpson	Patricia Trutty-Coohill	Rita P. Wolfson
Jamie Russell	Gilda Slate	Patricia Koo Tsien	Elizabeth R. Woodman
Rinaldina Russell	Susan Sloves	Paul* and Susan Turok	Larry Yates
Ruth Helen Ryer	Anne Elizabeth Smith	Mrs. Ernest Ulrich	Marcella Diane Young
Margaret H. Sachter*	Sally Alice Smith	John H. Vagelos	Evelyn Zafran
Aimee Saginaw	Toni E. Smith	Marta Varela	Gertrude Zehner
Richard E. Salomon	Leida Snow	Jamie Venise	Frances Zibrosky
Harvey Salzman	Richard E. Snyder	Constance Vidor	Vera L. Zolberg
Richard G. and Marguerite Sanders	Edward Sorel	John Vinton	Miriam Troop Zuger
Edith S. Sands	Carmelo V. Spadafore	Marie C.K. Vitale	
Lorna J. Sass	Amy R. Sperling	Elizabeth Voigt	
Joshua Sauberman	Carol Springstun	Thomas J. Volpe	
Carol Sauerhaft	Nancy Starr	Dina Von Zweck*	*Deceased
Robert Sawyer and Charlotte Barnard	Lila Steinberg-Rockstein	Ingrid E. Voss	
Naomi Schechter	Joshua L. Steiner	Joan Vreeland	
	Martha Roby Stephens	Carol Waaser	
	Claire Stern	Susanna Margare Wachtel	
	June Stern	Stephen Wagley	

NAMED ENDOWMENT FUNDS



Katherine Boo won the 2013 Helen Bernstein Book Award for Excellence in Journalism for *Behind the Beautiful Forevers: Life, Death, and Hope in a Mumbai Undercity*. She is with Selection Committee Chair James F. Hoge (left) and NYPL President Tony Marx. *The Helen Bernstein Book Award for Excellence in Journalism* was established in 1987 through a gift from Joseph Frank Bernstein, in honor of journalist Helen Bernstein (now Helen Bernstein Fealy).

Established with Gifts or Pledges of \$100,000 or More

The Hugh Leander Adams, Mary Trumbull Adams and
Hugh Trumbull Adams Public Library Fund
Allen & Company Incorporated Book Fund
Altman Foundation Endowment Fund
Karen and Tucker Andersen Book Fund
Anheuser-Busch Endowment Fund for the Schomburg Center
for Research in Black Culture
Rita and Helen Anton Endowment Fund for the Jewish Division
and the Library for the Performing Arts
Arents Fund
Astor Fellowship Fund
The Brooke Russell Astor Chief Librarian of Rare Books and
Manuscripts Fund
The Brooke Russell Astor Children's Literacy Endowment
Brooke Russell Astor Endowment Fund for Books
The Vincent Astor Foundation Fund
The Vincent Astor Foundation Fund for The Branch Libraries
George F. Baker Fund
Mr. and Mrs. Timothy R. Barakett Endowment for Children's and
Young Adult Programs and Services
Salo W. & Jeannette M. Baron Foundation Endowment Fund
Celeste Bartos Forum Conservation Fund
Celeste Bartos Fund for Exhibitions
Celeste Bartos Fund for Public Education Programs
The Celeste and Adam Bartos Endowment Fund
The Celeste Bartos and Jonathan Altman Endowment Fund
Mahnaz Ispahani Bartos and Adam Bartos Exhibitions Fund

Carrie Sperry Beinecke Fund
Harold B. Benenson Endowed Book Fund
Henry W. and Albert A. Berg Fund
The Margaret Liebman Berger Endowment Fund
The Helen Bernstein Award for Excellence in Journalism Fund
The Helen Bernstein Chief Librarian for Periodicals and Journals
Fund
The John S. Billings Memorial Fund
The John and Constance Birkelund Endowment Fund
Dennis L. Bonner Fund for the Schomburg Center for Research in
Black Culture
The William G. Bowen Endowment for Technology and
Scholarship
Jean MacElwee Brown Endowment Fund
Margaret L. Brown Fund for the Care and Preservation of
Manuscripts
The M. Ronald Brukenfeld Book Fund in honor of Marjorie
Loggia
Susie Brummer Endowment for the Processing of Materials in the
Music Division
The Ben F. Bryer, M.D., F.A.C.S., Endowment Fund to improve the
quality of life through education.
The Sally and Samuel C. Butler Endowment Fund
Samuel C. Butler History Collections Endowment Fund
Joe A. Callaway Endowment Fund for the Theatre Collection
Joan Hardy Clark Book Fund
Peter A. and Elizabeth S. Cohn Endowment
Lois Collier Endowment for Services to Immigrant
Communities
Charles H. Contoit Fund for the Branch Libraries
Katharine Cornell Endowment Fund
The Thomas B. Costain Endowment for the Center for the
Humanities
Mildred and Emma Crowell Endowment Fund
The Dorothy and Lewis B. Cullman Curator for Theatre Fund
The Dorothy and Lewis B. Cullman Endowment for the Center for
Scholars and Writers
The Dorothy and Lewis B. Cullman Endowment for the Library for
the Performing Arts
The Dorothy and Lewis B. Cullman Fund for the Performing
Arts Research Center
The Lewis B. and Dorothy Cullman Endowment for the Science,
Industry and Business Library
Charles E. Culpeper Foundation Fund
Mina Kirstein Curtiss Fund
Irvin Dagen and Margaret W. Dagen Endowment
Dance Special Acquisitions Fund
Anne E. de la Renta Cataloging Endowment Fund
Anne E. de la Renta Endowment Fund



Seward Park Library, one of NYPL's busiest locations, is adjacent to Seward Park in lower Manhattan.

Gladys K. Delmas Endowment to Support Collections in Music and Dance at the Library for the Performing Arts

Gladys and Jean Delmas Endowment for the Performing Arts Research Center

Jean Paul Delmas Book Fund

Jean Paul Delmas Endowment for the Music Division

The Susan and Douglas Dillon Chief Librarian of the Oriental Division Fund

Ruth W. Dolen Fund

The Dorot Chief Librarian of the Jewish Division and Bibliographer in Jewish Studies Fund

The Dorot Foundation Fund for The Dorot Jewish Division

Andreas C. Dracopoulos Family Endowment for Young Audiences

Martin Duberman LGBT Visiting Scholars Endowment

James H. Duffy Staff Education Endowment Fund

E.H.A. Foundation Endowment for Literacy Programming

E.H.A. Foundation New York City Endowment

William Falencki Book Fund for Polish Materials

The Feder Endowment Fund

The Gregory and Linda Fischbach Endowment Fund for Collections

Barbara and Lawrence Fleischman Endowed Book Fund

The Barbara G. and Lawrence A. Fleischman Executive Director for The New York Public Library for the Performing Arts Fund

The Ford Foundation Fund for the Scholars-in-Residence Program at the Schomburg Center for Research in Black Culture

The Ford Foundation Fund for the Theatre on Film and Tape Archive at The New York Public Library for the Performing Arts Ford Funds

The Ann and Richard Fudge Endowment Fund

Adele Dembiec Gehler Endowment Fund

Dr. and Mrs. Bernard R. Gelbaum Endowment

The New York Public Library General Book Fund Endowment

The Getty Endowment for Recorded Sound

Getty Literary Endowment

The Joanna Jackson Goldman Memorial Lecture Endowment Fund

Barbara Goldsmith Endowment Fund for Preservation and Conservation

The Horace W. Goldsmith Foundation Cataloging Endowment

The Jean and Jula Goldwurm Memorial Foundation Endowment Fund

Jula Goldwurm Endowment for Opera and Classical Vocal Music Collections

Howard L. Goodhart Memorial Fund

John D. Gordan Memorial Fund

The Vartan Gregorian Book Stack Endowment

Lawrence and Phyllis Gross Endowment Fund

Louise Grunwald Endowment Fund

Charles Dickens:
The Key to Character

FREE EXHIBITION

**September 14, 2012–
January 27, 2013**

The New York Public Library
Stephen A. Schwarzman Building
Sue and Edgar Wachenheim III Gallery

OLIVERTWIST

New York Public Library
Support for The New York Public Library's Exhibitions Program has been provided by Celeste Bartos, Sue and Edgar Wachenheim III, Mahnaz Ispahani Bartos and Adam Bartos Exhibitions Fund, and Jonathan Altman.
Illustration: Derek Marks

Featuring letters, photographs, and original artwork, *Charles Dickens: The Key to Character* celebrated the author's fictional creations.

The Louise and Henry Grunwald Endowment Fund
The Susan and John Gutfreund Endowment Fund
Inez Barbour Hadley Fund for the Henry Hadley Memorial Library
The Katherine B. Hadley Fund for Conservation
Edward S. Harkness Fund
Mrs. Stephen V. Harkness Fund
Mabel Herbert Harper Funds
Helen and Thomas Hastings Fund
The Howard Haycraft Endowment for the Center for the Humanities
William Randolph Hearst Endowment for the Acquisition and Processing of Periodicals in the General Research Division
William Randolph Hearst Foundation Scholarship Fund
Drue Heinz Book Fund for English Literature
Hermione Foundation Endowment Fund
Roger and Susan Hertog Endowment Fund

Kenneth D. Huszar Endowment Fund
Mahnaz Ispahani and Adam Bartos Endowment Fund
Isabel C. and Walter T. Iverson Book Fund
Carl Jacobs Foundation Photography Endowment
Robert Wood Johnson Jr. Charitable Trust Fund
Barbara Joseph Endowment Fund
Jeremiah Kaplan Endowment for the Social Sciences
The Barbara L. Karatz Acquisition Fund
The Barbara and William Karatz Fund for the Center for Scholars and Writers
William W. Karatz Fund for Acquisitions in the Science, Industry and Business Library
Edward G. Kennedy Print Fund
Karen and Kevin Kennedy Endowment Fund
Otto Kinkeldey Fund for the Music Division
The Robert M. Kirk Fund for Religion of Christianity
The Ruth and Seymour Klein Endowment for Exhibitions provided by the Bertha and Isaac Liberman Foundation, Inc.
The Ruth Kleinman Fund
Mr. and Mrs. John Klingenstein Foundation Endowment Fund
Elinor D. Krauthamer Book Fund
The Jeanette Labelson Memorial Endowment Fund
Roy E. Larsen Fund
The Harry Lebensfeld Fund for Economics and the Dorot Jewish Division
The Paul LeClerc Endowment Fund for Research Collections
Lewis Cass Ledyard Fund
Lewis Cass Ledyard Legacy
The Martin and Sylvia Leifer Endowment Fund
Mr. and Mrs. Robert Liberman
The Charles J. Liebman Endowment Fund
The New York Public Library Jewish Division Littauer Book Fund
The Frederick Loewe Foundation Endowment for Musical Theatre
The Lucille Lortel Endowment Fund for the Theatre on Film and Tape Archive
Jesse Lowen Memorial Fund
Harry M. Lydenberg Fund
Duncan MacDougald Jr. Fund
The Louisa Rice Malkin, Rebecca Swift Malkin, Elizabeth Lummis Malkin and Emily Mason Malkin Fund for Literary Works
The Berthe Manent Fund
Meyer and Min Manischewitz Foundation Inc. Endowment Fund
The Marie Markus Endowment Fund
Catherine and Donald Marron Endowment Fund
Donald B. and Catherine C. Marron Endowment Fund

Helen A. Masten Endowment for Scholarships for Children's Librarians
 Charles J. Mauro Fund
 Joseph and Ceil Mazer Jewish Division Endowment Fund
 William McFarland Fund
 Ben Meiselman Fund for Opera
 The Andrew W. Mellon Director of The Research Libraries Fund
 The Andrew W. Mellon Foundation Fund for Cataloging
 The Andrew W. Mellon Foundation Fund for Fellowships in the Center for Scholars and Writers
 The Andrew W. Mellon Foundation Fund for The Research Libraries
 The Andrew W. Mellon Foundation Fund for the Schomburg Center for Research in Black Culture
 The Andrew W. Mellon Foundation Preservation Fund
 The Andrew W. Mellon Foundation Preservation Fund for the General Research Collections
 The Andrew W. Mellon Foundation Technological Planning Fund
 The Robert B. Menschel Curator of Photography Fund
 The Robert and Joyce Menschel Director for the Science, Industry and Business Library Fund
 The Merck Company Foundation Endowment Fund for the Schomburg Center for Research in Black Culture
 Kathryn and Gilbert Miller Fund Endowment for the Theatre on Film and Tape Archive
 The Irma and Paul Milstein Division of United States History, Local History and Genealogy Endowment Fund
 J. P. Morgan & Company Incorporated Fund for the Economic and Public Affairs Division
 William C. Morris Endowment Fund
 The Belle and Murray L. Nathan Endowment for the Dance Collection
 National Endowment for the Arts Fund for the Dance Collection
 National Endowment for the Arts Fund for the Performing Arts Research Center
 National Endowment for the Humanities Endowment for The Manuscripts and Archives Division
 National Endowment for the Humanities Fund for Humanities Acquisitions
 The Susan and Donald Newhouse Fund for the Center for Scholars and Writers
 The Susan and Donald Newhouse Fund for the Schomburg Scholars-in-Residence Program
 Esther Tow Newman and Stephen Gottlieb Endowment
 Shoichi Noma Book Endowment for Oriental Materials
 Nyerere Fund
 The Family of Donald and Mary Oenslager Fund for the Library for the Performing Arts
 Maurice J. Oringer Fund
 Max Palevsky Endowment for the Robert B. Silvers Lecture
 William S. Paley Book Fund
 The Parsons Family Foundation Endowment Fund for Schomburg Collections
 Oliver Payne Memorial Fund
 Peck Stacpoole United States History, Local History and Genealogy Endowment Fund
 Jacob Perlow Fund
 Carl H. Pforzheimer Fund
 The Carl and Lily Pforzheimer Foundation, Inc.
 Lionel I. Pincus Endowment Fund for the Map Division
 Fairlie Honeyman Popovic Endowment Fund for Librarian Scholarships
 The Harold Prince Fund for the Theatre on Film and Tape Archive
 The Henry and Henrietta Quade Foundation Endowment Fund
 The Aaron and Clara Greenhut Rabinowitz Chief Librarian for Preservation Fund
 The Aaron and Clara Greenhut Rabinowitz Fund
 The Hirsch and Braine Raskin Foundation Book Endowment
 Tibor Remenyi Collection Fund
 Rhode Island Corporation Fund
 Jerome Robbins Archive of the Recorded Moving Image Fund
 The Jerome Robbins Foundation Endowment Fund for the Dance Division
 Alfred W. Roberts New York City Real Estate and Real Estate Law Collection Fund
 Charles E. Culpeper Endowment from the Rockefeller Brothers Fund for the Collections of the Schomburg Center for Research in Black Culture
 Rockefeller Brothers Dance Documentation Endowment Fund
 Rockefeller Foundation Performing Arts Fund at the Schomburg Library
 David Rockefeller Endowment Fund
 John D. Rockefeller, Jr. Fund
 Rodgers and Hammerstein Chair for Recorded Sound Fund
 Rodgers and Hammerstein Foundation Fund
 The Elizabeth and Felix Rohatyn Endowment Fund
 The Elizabeth and Felix Rohatyn Endowment Fund for the Science, Industry and Business Library
 Billy Rose Theatre Collection Fund
 The Frederick Phineas and Sandra Priest Rose Chief Librarian of the General Research Division Fund

The Susan and Elihu Rose Foundation in Honor of Marshall Rose
The Judy R. and Alfred A. Rosenberg Curator of Exhibitions Fund for The New York Public Library for the Performing Arts
Dr. Herman Rosenthal Family Memorial Fund for Russian Collections
Elizabeth E. Roth Fund
Helena Rubinstein Endowment Fund
Edna Barnes Salomon Room Fund
The Iris and Ralph Salomon Cartographic Preservation Endowment Fund
The Richard and Edna Salomon Fund
The Fan Fox and Leslie R. Samuels Foundation Fund for the Dance Collection
Rona and Martin L. Schneider Endowment for the Print Collection
Irving and Sara Selis Endowment for the Andrew Heiskell Braille and Talking Book Library
Leo Seltzer Endowment
Evelyn Shrifte Endowed Book Fund in memory of the Shrifte Family
Almet Skeel Fund
Emily E. F. Skeel Fund
Joseph and Sylvia Slifka Foundation Endowment
Leona Sobel Endowment Fund for Conservation and Preservation
Margaret and Herman Sokol Endowment Fund
Margaret and Herman Sokol Endowment Fund for the Science, Industry and Business Library and for the Library for the Performing Arts
Margaret and Herman Sokol Public Education Fund
The Alfred Z. Solomon – Janet A. Sloane Fashion Industry Endowment Fund
The William Augustus Spencer Fund
The Starr Foundation Endowment Fund
Jules and Doris Stein Foundation and Jean Stein Fund for Small Press Publications
Miriam and Harold Steinberg Foundation Exhibition Fund
Miriam and Harold Steinberg Foundation Fund for Drama
Saul P. Steinberg Cataloging Endowment
Saul and Gayfryd Steinberg Endowment for Exhibitions
Dorothy Strelsin Theatre on Film and Tape Archive Endowment Fund
Lola Szladits Memorial Fund for the Berg Collection
Arthur Tracy “The Street Singer” Endowment Fund

Barbara W. Tuchman Fund
Mel and Lois Tukman Endowment Fund
Uris Fund for Children's Books
Linda May Uris Humanities Endowment
Alberto Vitale Endowment for the Digital Library
Joyce von Bothmer Fund in honor of Vartan Gregorian
The Sue and Edgar Wachenheim III Endowment Fund for Exhibition Publications
The Sue and Edgar Wachenheim III Endowment Fund for Exhibitions
The Sue and Edgar Wachenheim III Fund
DeWitt Wallace Endowment Fund
DeWitt Wallace Reader's Digest Fund for the Current Periodicals Room
The Wallach and Wachenheim Families 2011 Endowment Fund in Honor of Anthony W. Marx
The Miriam and Ira D. Wallach 2010 Endowment Fund
The Miriam and Ira D. Wallach Cataloging and Conservation of Art, Prints and Photographs Fund
The Miriam and Ira D. Wallach Chief Librarian of Art, Prints and Photographs Fund
The Miriam and Ira D. Wallach Fund for the Purchase of Items for the Division of Art, Prints and Photographs
Bruno Walter Memorial Foundation Fund
Weatherhead Foundation Book Fund
Hebe Weenolsen Endowment for British and American History
The Sue Ann and John Weinberg Director of the Center for Scholars and Writers Fund
The John C. Whitehead Book Fund in honor of Nancy Dickerson Whitehead
Payne Whitney Legacy
Henry and Muriel Winestine Memorial Fund for Adult Literacy Programs
Young Lions Fiction Award Endowment
Sergei S. Zlinkoff Fund for Medical Research and Education Endowment

Named Endowment Funds established with Gifts of \$25,000 to \$99,999

Magnus Hirschfeld Endowment Fund

GOVERNMENT FUNDING

American Recovery and Reinvestment Act's Broadband Technology Opportunities Program
 The City of New York Empire State Development Corporation
 National Endowment for the Arts
 National Endowment for the Humanities
 New York State Council on the Arts
 New York State Education Department
 The State of New York Institute of Museum and Library Services
 Universal Service Administrative Company, Schools and Libraries Division

The New York Public Library is supported generously by elected officials at city, state, and federal levels:

City of New York

Mayor Michael R. Bloomberg
Speaker Christine C. Quinn
Comptroller John C. Liu
Bronx Borough President Ruben Diaz, Jr.
Manhattan Borough President Scott M. Stringer
Staten Island Borough President James P. Molinaro
Council Member Maria del Carmen Arroyo
Council Member Gale A. Brewer
Council Member Fernando Cabrera
Council Member Margaret Chin

Council Member Inez E. Dickens
Council Member Helen D. Foster
Council Member Daniel R. Garodnick
Council Member Vincent J. Gentile
Council Member Vincent Ignizio
Council Member Robert Jackson
Council Member Andy King
Council Member G. Oliver Koppell
Council Member Jessica S. Lappin
Council Member Melissa Mark-Viverito
Council Member Rosie Mendez
Council Member James S. Oddo
Council Member Annabel Palma
Council Member Domenic M. Recchia, Jr.
Council Member Joel Rivera
Council Member Ydanis Rodriguez
Council Member Deborah Rose
Council Member James Vacca
Council Member Jimmy Van Bramer

State of New York

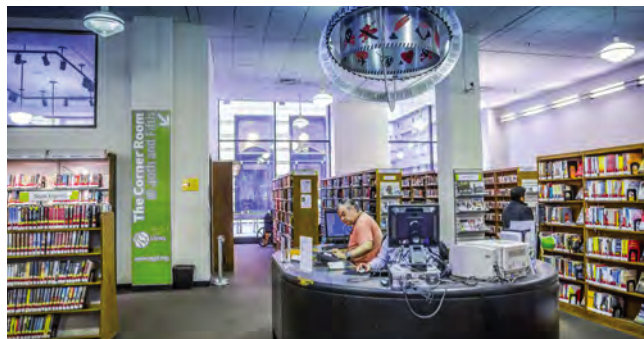
Governor Andrew M. Cuomo
Lieutenant Governor Robert J. Duffy
Senate Majority Leader Dean G. Skelos
Assembly Speaker Sheldon Silver
Senator Rev. Rubén Diaz, Sr.
Senator Adriano Espaillat

Senator Ruth Hassell-Thompson
Senator Brad M. Hoylman
Senator Jeffrey D. Klein
Senator Liz Krueger
Senator Andrew J. Lanza
Senator Bill Perkins
Senator Gustavo Rivera
Senator Diane J. Savino
Senator José M. Serrano
Senator Daniel L. Squadron
Assembly Member Carmen E. Arroyo
Assembly Member Michael Benedetto
Assembly Member Joseph Borelli
Assembly Member Marcos Crespo
Assembly Member Michael J. Cusick
Assembly Member Jeffrey Dinowitz
Assembly Member Herman D. Farrell, Jr.
Assembly Member Vanessa L. Gibson
Assembly Member Mark Gjonaj
Assembly Member Deborah J. Glick
Assembly Member Richard N. Gottfried
Assembly Member Carl E. Heastie
Assembly Member Brian P. Kavanagh

Assembly Member Micah Z. Kellner
Assembly Member Nicole Malliotakis
Assembly Member Daniel J. O'Donnell
Assembly Member Dan Quart
Assembly Member José Rivera
Assembly Member Robert Rodriguez
Assembly Member Gabriela Rosa
Assembly Member Linda B. Rosenthal
Assembly Member Luis Sepulveda
Assembly Member Matthew Titone
Assembly Member Keith L.T. Wright

United States Congress

Senator Kirsten E. Gillibrand
Senator Charles E. Schumer
Congressman Joseph Crowley
Congressman Eliot L. Engel
Congressman Michael Grimm
Congresswoman Carolyn B. Maloney
Congressman Jerrold Nadler
Congressman Charles B. Rangel
Congressman José E. Serrano
Congresswoman Nydia M. Velazquez



Mid-Manhattan Library is open 88 hours a week (more hours than any other location) and serves users from all over New York City and beyond.

REPORT OF THE TREASURER

It's been an exciting year at The New York Public Library, one in which the Library has worked especially hard to expand its educational resources to attract and serve so many knowledge-hungry patrons throughout New York City and across the world. Indeed, NYPL has already become the City's most important adjunct education institution. Here are a few brief examples of the Library's education projects:

- NYPL has tripled the number of English for Speakers of Other Languages (ESOL) classes it offers. This makes the Library one of the largest providers of this service to New York's rapidly expanding immigrant community.
- The Library is doubling its offerings of computer skills classes and assisted computer sessions to serve 40,000 more New Yorkers who need such skills to get jobs and gain entry to the digital future.
- MyLibraryNYC, which makes NYPL's resources available to teachers and students in New York City public schools, is now up and running in more than a third of the schools, and is slated to be available in all elementary, middle, and high schools in another two years.
- The Library is offering exponentially more of its resources online, making NYPL's vast resources more widely available.

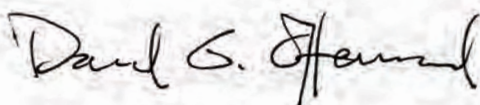
The financial burden of these achievements is significant because demand for all the Library's traditional services is robust and growing. Thus NYPL needs to continue and expand all that it's doing and add new services at the same time!

NYPL is able to meet this challenge thanks to tremendous philanthropic generosity and the foresight of the Board of Trustees. A dramatic increase in private contributions over the past several years, coupled with the trustees' conservative stewardship of these resources, has put the Library in a very strong financial position.

For the first time, at the close of fiscal year 2013, the Library's investment portfolio topped the \$1 billion mark, a truly remarkable recovery from the \$530 million mark in March of 2009 at the nadir of the market following the 2008 financial crisis. Although NYPL still aspires to have its investment portfolio grow to much greater levels, at this point it provides a crucial—and very dependable—\$45 million each year to support the Library's activities.

In June 2013, the Library's net assets also topped \$1 billion for the first time. (Net assets are the equivalent of "stockholders equity" for a nonprofit organization.)

Both the notable investment portfolio and net assets are markers for how well positioned the Library is to aggressively expand its numerous services for children, teens, job seekers, immigrants, scholars, and everyone else who relies on the Library's essential resources. We appreciate the support of all the New Yorkers who have helped NYPL attain its successes.



David G. Offensend

Treasurer
March 2014

FIGURE 1

BRANCH LIBRARY REVENUES (\$ 171,466,000)

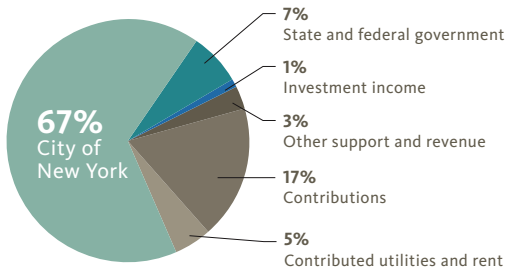


FIGURE 2

RESEARCH LIBRARY REVENUES (\$ 109,624,000)

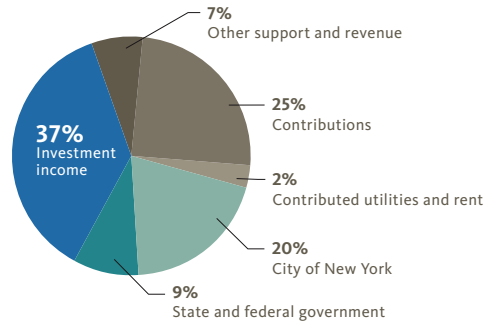


FIGURE 3

BRANCH LIBRARY EXPENSES (\$ 156,479,000)

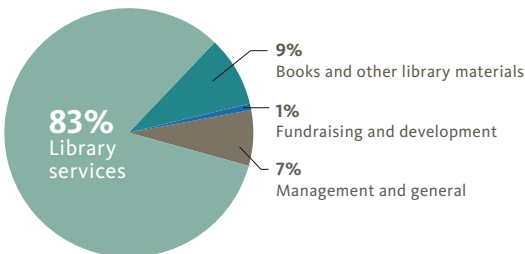


FIGURE 4

RESEARCH LIBRARY EXPENSES (\$ 113,127,000)

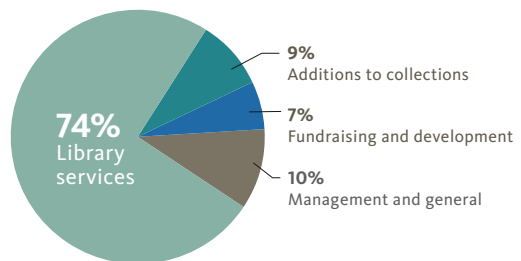
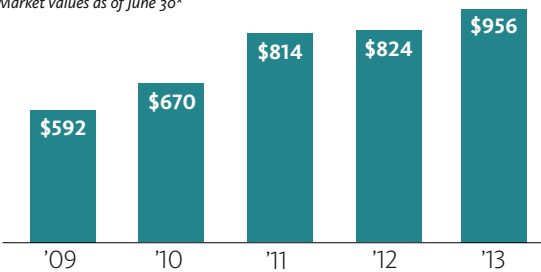


FIGURE 5

CHANGE IN ENDOWMENT (in millions)

Market values as of June 30*



*Excludes real estate investment used in operations.

BALANCE SHEETS

JUNE 30, 2013 AND 2012

IN THOUSANDS OF DOLLARS

	2013	2012
ASSETS		
Cash and cash equivalents	\$ 58,035	\$ 97,310
Government and other receivables	34,105	26,210
Contributions receivable, net	66,308	62,216
Other assets	2,643	2,012
Funds held by bond trustee	21,130	24,631
Investments	1,030,775	889,324
Real estate investment used in operations	1,084	1,084
Fixed assets, net	294,379	284,821
Collections		
Total assets	\$ 1,508,459	\$ 1,387,608
LIABILITIES		
Accounts payable and accrued liabilities	\$ 64,547	\$ 57,405
Deferred revenue—City of New York and other	86,911	87,488
Long-term debt	80,360	84,510
Interest rate swaps	11,470	16,917
Accrued postretirement benefits	166,168	182,757
Total liabilities	409,456	429,077
NET ASSETS		
Unrestricted	378,994	295,593
Temporarily restricted	287,904	236,691
Permanently restricted	432,105	426,247
Total net assets	1,099,003	958,531
Total liabilities and net assets	\$ 1,508,459	\$ 1,387,608

FINANCIAL ACTIVITIES

FOR THE YEARS ENDED JUNE 30, 2013 AND 2012

IN THOUSANDS OF DOLLARS

	2013	2012
OPERATING REVENUES		
City of New York	\$ 136,955	\$ 133,066
State of New York	18,685	16,391
Federal government	2,115	1,731
Contributed utilities and rent	11,140	10,072
Private contributions and grants	57,522	32,110
Investment return appropriated for spending	41,902	38,234
Fines, royalties, and other revenue	12,771	12,982
Total operating revenues	281,090	244,586
OPERATING EXPENSES		
Library services	226,979	211,437
Fundraising and membership development	8,517	8,170
Management and general	23,398	23,308
Total operating expenses	258,894	242,915
Additions to research collections	10,712	10,361
Total operating expenses and additions to research collections	269,606	253,276
Change in net assets from operating activities, before gains on sales of real estate	11,484	(8,690)
Gains on sales of real estate, net	—	80,767
Change in net assets from operating activities	11,484	72,077
NON-OPERATING ACTIVITIES		
Endowment contributions and funds designated for long-term investment	17,822	45,068
Appropriations and contributions for capital	16,966	13,118
Contributed property for use	—	14,466
Depreciation and amortization	(22,210)	(23,158)
Investment return, net of amounts appropriated	84,825	(55,257)
Postretirement benefits changes other than net periodic benefit cost	26,138	(29,306)
Change in value of interest rate swaps	5,447	(5,255)
Change in net assets from non-operating activities	128,988	(40,324)
Change in net assets	140,472	31,753
Net assets at beginning of year	958,531	926,778
Net assets at end of year	\$ 1,099,003	\$ 958,531

DIRECTORY OF LOCATIONS

BRONX

- Allerton • 2740 Barnes Avenue • 718-881-4240
- Baychester • 2049 Asch Loop North • 718-379-6700 +
- Belmont • 610 East 186th Street • 718-933-6410
- Bronx Library Center • 310 East Kingsbridge Road • 718-579-4244
- Castle Hill • 947 Castle Hill Avenue • 718-824-3838
- City Island • 320 City Island Avenue • 718-885-1703
- Clason's Point • 1215 Morrison Avenue • 718-842-1235 +
- Eastchester • 1385 East Gun Hill Road • 718-653-3292
- Edenwald • 1255 East 233rd Street • 718-798-3355
- Francis Martin • 2150 University Avenue • 718-295-5287
- Grand Concourse • 155 East 173rd Street • 718-583-6611 ○ +
- High Bridge • 78 West 168th Street • 718-293-7800 +
- Hunt's Point • 877 Southern Blvd. • 718-617-0338 +
- Jerome Park • 118 Eames Place • 718-549-5200 +
- Kingsbridge • 291 West 231st Street • 718-548-5656 +
- Melrose • 910 Morris Avenue • 718-588-0110 ◆
- Morris Park • 985 Morris Park Avenue • 718-931-0636
- Morrisania • 610 East 169th Street • 718-589-9268
- Mosholu • 285 East 205th Street • 718-882-8239 +
- Mott Haven • 321 East 140th Street • 718-665-4878 +
- Parkchester • 1985 Westchester Avenue • 718-829-7830 +
- Pelham Bay • 3060 Middletown Road • 718-792-6744 +
- Riverdale • 5540 Mosholu Avenue • 718-549-1212 +
- Sedgwick • 1701 University Avenue • 718-731-2074
- Soundview • 660 Soundview Avenue • 718-589-0880 ○
- Spuyten Duyvil • 650 West 235th Street • 718-796-1202 ○ +
- Throg's Neck • 3025 Cross Bronx Expy Ext • 718-792-2612
- Tremont • 1866 Washington Avenue • 718-299-5177 +
- Van Cortlandt • 3874 Sedgwick Avenue • 718-543-5150
- Van Nest • 2147 Barnes Avenue • 718-829-5864 ○
- Wakefield • 4100 Lowerre Place • 718-652-4663
- West Farms • 2085 Honeywell Avenue • 718-367-5376
- Westchester Square • 2521 Glebe Avenue • 718-863-0436 ◆
- Woodlawn Heights • 4355 Katonah Avenue • 718-519-9627
- Woodstock • 761 East 160th Street • 718-665-6255 ◆

STATEN ISLAND

- Dongan Hills • 1617 Richmond Road • 718-351-1444
- Great Kills • 56 Giffords Lane • 718-984-6670 +
- Huguenot Park • 830 Huguenot Avenue • 718-984-4636 +
- Mariners Harbor • 206 South Avenue • 212-621-0690 +
- New Dorp • 309 New Dorp Lane • 718-351-2977
- Port Richmond • 75 Bennett Street • 718-442-0158
- Richmondtown • 200 Clarke Avenue • 718-668-0413
- South Beach • 21-25 Robin Road • 718-816-5834 +
- St. George Library Center • 5 Central Avenue • 718-442-8560 +
- Stapleton • 132 Canal Street • 718-727-0427
- Todt Hill–Westerleigh • 2550 Victory Boulevard • 718-494-1642 +
- Tottenville • 7430 Amboy Road • 718-984-0945 +
- West New Brighton • 976 Castleton Avenue • 718-442-1416

MANHATTAN

- 58th Street • 127 East 58th Street • 212-759-7358 ○
- 67th Street • 328 East 67th Street • 212-734-1717
- 96th Street • 112 East 96th Street • 212-289-0908 +
- 115th Street • 203 West 115th Street • 212-666-9393
- 125th Street • 224 East 125th Street • 212-534-5050
(scheduled to reopen in spring 2014)
- Aguilar • 174 East 110th Street • 212-534-2930 +
- Andrew Heiskell Braille and Talking Book Library •
40 West 20th Street • 212-206-5400
- Battery Park City • 175 North End Avenue • 212-790-3499 +
- Bloomingdale • 150 West 100th Street • 212-222-8030 +
- Chatham Square • 33 East Broadway • 212-964-6598
- Children's Center at 42nd Street • Fifth Avenue & 42nd Street • 212-621-0208
- Columbus • 742 Tenth Avenue • 212-586-5098 +
- Countee Cullen • 104 West 136th Street • 212-491-2070
- Epiphany • 228 East 23rd Street • 212-679-2645 +
- Fort Washington • 535 West 179th Street • 212-927-3533 ◆
- George Bruce • 518 West 125th Street • 212-662-9727
- Grand Central • 135 East 46th Street • 212-621-0670
- Hamilton Fish Park • 415 East Houston Street • 212-673-2290 ○
- Hamilton Grange • 503 West 145th Street • 212-926-2147 +
- Harlem • 9 West 124th Street • 212-348-5620
- Hudson Park • 66 Leroy Street • 212-243-6876
- Inwood • 4790 Broadway • 212-942-2445
- Jefferson Market • 425 Avenue of the Americas • 212-243-4334
- Kips Bay • 446 Third Avenue • 212-683-2520 +
- Macomb's Bridge • 2650 Adam Clayton Powell, Jr. Boulevard • 212-281-4900 ○
- Mid-Manhattan Library • 455 Fifth Avenue (at 40th Street) • 212-340-0863
- Morningside Heights • 2900 Broadway • 212-864-2530 +
- Muhlenberg • 209 West 23rd Street • 212-924-1585
- Mulberry Street • 10 Jersey Street • 212-966-3424 +
- New Amsterdam • 9 Murray Street • 212-732-8186
- NYPL for the Performing Arts • 40 Lincoln Center Plaza
(at 65th Street) • 917-275-6975
- Ottendorfer • 135 Second Avenue • 212-674-0947 ◆
- Riverside • 127 Amsterdam Avenue • 212-870-1810 +
- Roosevelt Island • 524 Main Street • 212-308-6243 +
- Schomburg Center for Research in Black Culture •
515 Malcolm X Boulevard (at 135th Street) • 212-491-2200
- Science, Industry and Business Library • 188 Madison Avenue (at 34th Street)
• 917-275-6975
- Seward Park • 192 East Broadway • 212-477-6770 +
- St. Agnes • 444 Amsterdam Avenue • 212-877-4380 +
- Stephen A. Schwarzman Building • Fifth Avenue & 42nd Street • 917-275-6975
- Terence Cardinal Cooke–Cathedral • 560 Lexington Avenue • 212-752-3824
- Tompkins Square • 331 East 10th Street • 212-228-4747
- Washington Heights • 1000 St. Nicholas Avenue • 212-923-6054
- Webster • 1465 York Avenue • 212-288-5049
- Yorkville • 222 East 79th Street • 212-744-5824 ◆

○ Partially accessible ◆ Non-accessible

+ Return library materials from any branch to an outdoor book drop
24 hours a day, 7 days a week.

All library locations are handicap accessible unless otherwise noted.

RECOMMENDED FORM OF BEQUEST

The New York Public Library is a not-for-profit education corporation incorporated under the laws of the State of New York. The Library is exempt from federal income tax as an organization described in section 501(c)(3) of the Internal Revenue Code and is a publicly supported organization under section 170 of the Code.



Gifts and bequests to the Library are deductible under the federal income, estate, and gift tax laws. For federal tax purposes, the Library uses its formal corporate name: The New York Public Library, Astor, Lenox and Tilden Foundations (reflecting its incorporation by the consolidation of the Astor Library, the Lenox Library, and the Tilden Trust). The Trustees of the Library recommend that for estate planning purposes, friends consider the following language for use in their Wills:

“I give and bequeath (dollar amount, percentage of residuary estate, or description of property) to The New York Public Library, Astor, Lenox and Tilden Foundations, Fifth Avenue and 42nd Street, New York, New York 10018, for the Library’s general purposes.”

If you wish to make a bequest for a specific purpose, it is suggested that you consider adding the following language to any restriction you may impose on your bequest:

“If at any time in the judgment of the Trustees of the Library the designated purpose of this bequest proves to be impracticable or impossible, I authorize the Trustees to use the income and principal of this bequest for any purpose they deem to be consistent with the general intent and purpose set forth herein.”

Should you decide to leave a bequest to the Library in your Will, you will become a member of the Bigelow Society. Created by the Library in 1991, the Bigelow Society is an honorary organization whose purpose is to recognize the generosity of individuals, during their lifetime, who include this institution in their estate plans. The Library expresses its gratitude to members by inviting them to special Library events and by listing their names in donor publications under the Bigelow Society (unless donors prefer to remain anonymous).

If you or your attorney would like to discuss a bequest with a member of the Library’s staff, please call John M. Bacon at 212-930-0568, or write to him at plannedgifts@nypl.org or at the following address: Development Office, The New York Public Library, 445 Fifth Avenue, New York, New York 10018.



New York
Public
Library